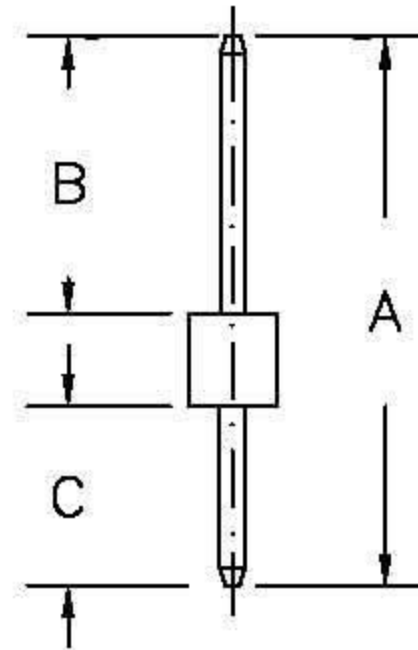
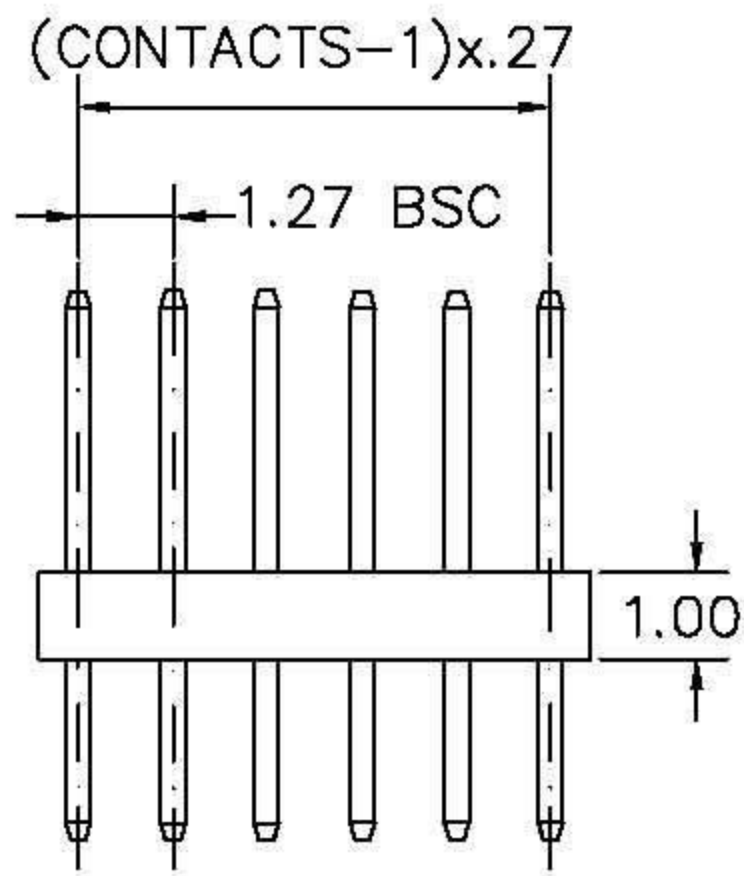


RECOMMENDED P.C.B LAYOUT



A: \_\_\_\_\_ mm B: \_\_\_\_\_ mm C: \_\_\_\_\_ mm

**MATERIAL**

HOUSING : THERMOPLASTIC UL94V-0

CONTACT : COPPER ALLOYS

**SPECIFICATION**

CURRENT: 1A

OPERATING TEMPERATURE: -55°C TO +105°C

CONTACT RESISTANCE : 30 MILLIOHMS MAX

INSULATION RESISTANCE : 5000 MEGAOHMS MIN

DIELECTRIC STRENGTH : 600 VAC MIN

DURABILITY : 50 CYCLES

RETENTION FORCE : 454g MIN

**FINISH**

CONTACT PLATING SEE ORDER INFORMATION

CONTACTS	1X26
1X2	1X27
1X3	1X28
1X4	1X29
1X5	1X30
1X6	1X31
1X7	1X32
1X8	1X33
1X9	1X34
1X10	1X35
1X11	1X36
1X12	1X37
1X13	1X38
1X14	1X39
1X15	1X40
1X16	1X41
1X17	1X42
1X18	1X43
1X19	1X44
1X20	1X45
1X21	1X46
1X22	1X47
1X23	1X48
1X24	1X49
1X25	1X50

比例 (SCALE)	FREE	繪圖 (DRAW)	Tina	<b>FLYiNG</b> INTERNATIONAL
單位 (UNIT)	MM	審核 (CHECK)	/ /	
一般公差 (TOLERANCE)		承認 (AP*E)	/ /	圖名 (NAME) : PIN HEADER 1.27X1.27
.0=±0.38 .00=±0.25 ANG=±5°		投影法 PROJECTION	第三角	料號 (PART NO) 114-13XX1-XXXX
				圖號 (DRAW NO) 1X