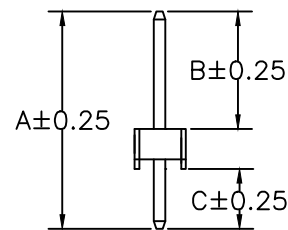
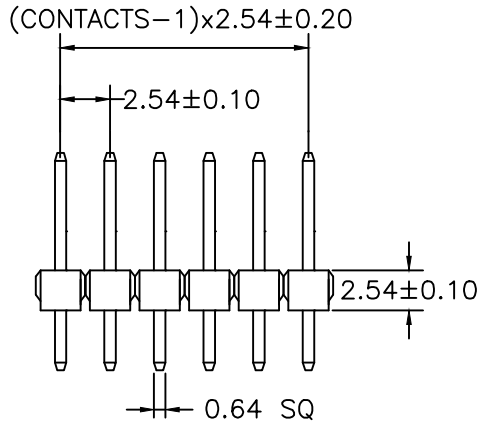


RECOMMENDED P.C.B LAYOUT



P254S1160104G

排針-2.54mm-180度-11.64mm-1\*4PIN PBT  
(塑高=2.54mm 上針=6.05mm 下針=3.05mm)

A: 11.64 mm B: 6.05 mm C: 3.05 mm

MATERIAL

HOUSING : PBT,UL94V-0  
CONTACT : COPPER ALLOYS  
PLATED : GOLD FLASH  
COLOR : BLACK

SPECIFICATION

CURRENT: 3A  
OPERATING TEMPERATURE: -55°C TO +105°C  
CONTACT RESISTANCE : 20 MILLIOHMS MAX  
INSULATION RESISTANCE : 1000 MEGAOHMS MIN  
WITHSTANDING VOLTAGE: AC 1000V RMS

CONTACTS	1X21
1X2	1X22
1X3	1X23
1X4	1X24
1X5	1X25
1X6	1X26
1X7	1X27
1X8	1X28
1X9	1X29
1X10	1X30
1X11	1X31
1X12	1X32
1X13	1X33
1X14	1X34
1X15	1X35
1X16	1X36
1X17	1X37
1X18	1X38
1X19	1X39
1X20	1X40

比例 (SCALE)	FREE	繪圖 (DRAW)	Tina	<b>FLYING</b> INTERNATIONAL
單位 (UNIT)	MM	審核 (CHECK)	/ /	
一般公差 (TOLERANCE)		承認 (AP*E)	/ /	圖名 (NAME) : PIN HEADER 2.54 180° H:2.54
.0=±0.38 .00=±0.25 ANG=±5°		投影法 PROJECTION	第三角	料號 (PART NO) 111-1341-XX10
				圖號 (DRAW NO) 1X