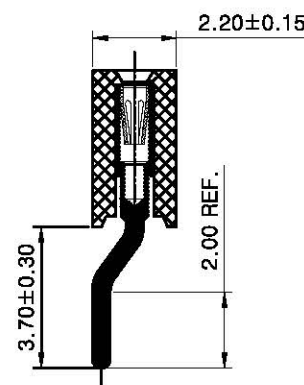
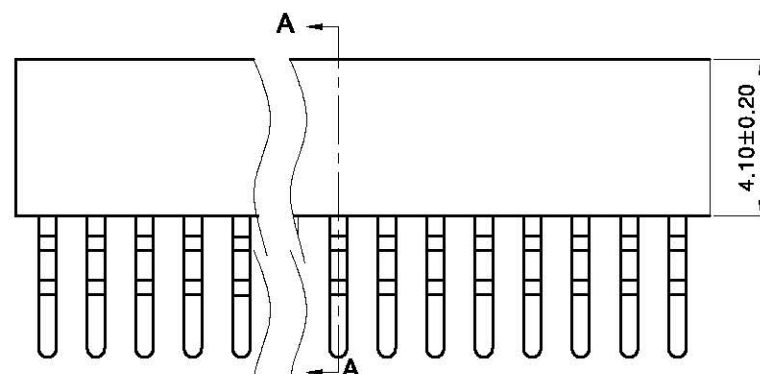


N=No. of contacts / per row

Dim	P位 (1-50)
Dim A	1.27*N+0.41
Dim B	1.27*(N-1)



SECTION A-A



PCB Layout

### Technical Specs:

Insulator: Black glass filled polyester PPS-GF30-FR  
Flammability: UL 94V-O  
Sleeve: Brass CuZn36Pb3 (C36000)  
Contact clip (6 finger): Beryllium copper (C17200)  
Mechanical life: min 500 cycles  
Rated current: 1 A  
Contact resistance: max 10mΩ  
Dielectric strength: min 300 V RMS  
Mating pins: Outside Diameter 0.38 to 0.50 mm  
Forces: (polished steel gauge 0.41 mm)  
Insertion: 0.5 N typ.  
Withdrawal: 0.2N typ.  
Coplanarity SMD terminations: max 0.1 mm  
(measured on 25 mm long connectors)  
Pin Part Number: P1068X630X0T

### Part Number:

145 NN 1 4 4 X 068

Pitch: 5-1.27mm (0.05in)

Pin number of each row: 01 ~ 50 PIN

Number of Rows: 1-Single Row

Insulator Height: 4 - 4.10mm

Tail & Mounting Style: 4 - Surface mount-parallel

PIN Code:

Plated Code

(Pin Sleeve / Contact Clip):

- 0 - Tin / Tin
- 1 - Tin / Gold Flash
- 2 - Gold Flash / Gold Flash 1u"
- 3 - Tin / 0.075um gold 3u"
- 5 - Tin / 0.125um gold 5u"
- 6 - Tin / 0.25um gold 10u"
- 7 - Tin / 0.375um gold 15u"
- 8 - Tin / 0.75um gold 30u"

E			Units	mm	Scale	5:1	Drawing By	Date
D			Tolerance Unless Otherwise Specified				Hui-Wen	2016/07/09
C			.X ~ ±0.30				Reviwed By	Date
B			.XX ~ ±0.25				Nick-Yin	2016/07/09
A	RELEASED	09/07/16	.XXX ~ ±0.20				Approval By	Date
REV	DESCRIPTION.	Date	Angle ~ ± 3°				Kirby-Xiao	2016/07/09

FLYiNG

Sheet	1 of 1	Title	1.27mm SH Socket L7.70 Single Row H4.10mm Type		
Third Angle Projection		Part No.	145NN144X068	REV	A