



1N50Z

Power MOSFET

1.3A, 500V N-CHANNEL POWER MOSFET

DESCRIPTION

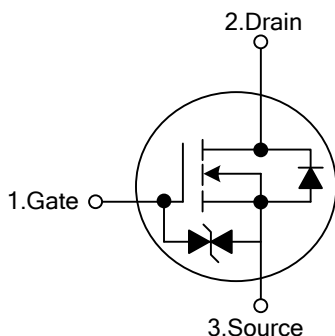
The UTC **1N50Z** is an N-channel mode power MOSFET using UTC's advanced technology to provide customers with planar stripe and DMOS technology. This technology allows a minimum on-state resistance and superior switching performance. It also can withstand high energy pulse in the avalanche and commutation mode.

The UTC **1N50Z** is generally applied in high efficiency switch mode power supplies, active power factor correction and electronic lamp ballasts based on half bridge topology.

FEATURES

- * $R_{DS(ON)} < 6.0\Omega @ V_{GS}=10V$
- * High Switching Speed
- * 100% Avalanche Tested

SYMBOL

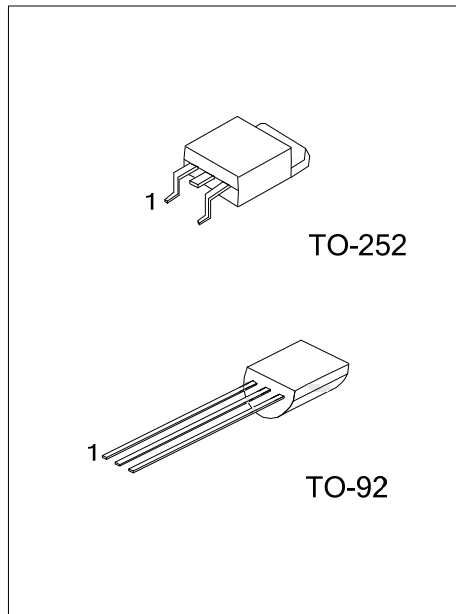


ORDERING INFORMATION

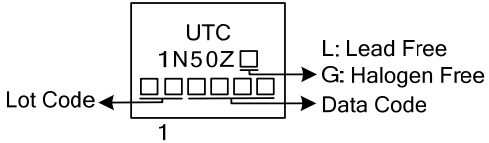
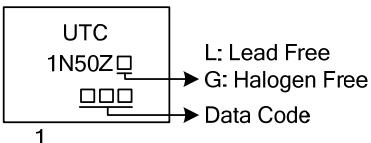
Ordering Number		Package	Pin Assignment			Packing
Lead Free	Halogen Free		1	2	3	
1N50ZL-T92-B	1N50ZG-T92-B	TO-92	G	D	S	Tape Box
1N50ZL-T92-K	1N50ZG-T92-K	TO-92	G	D	S	Bulk
1N50ZL-TN3-R	1N50ZG-TN3-R	TO-252	G	D	S	Tape Reel

Note: Pin Assignment: G: Gate D: Drain S: Source

<p>1N50ZL-T92-B</p> <p>(1) Packing Type</p> <p>(2) Package Type</p> <p>(3) Lead Free</p>	<p>(1) B: Tape Box, K: Bulk, R: Tape Reel</p> <p>(2) T92: TO-92, TN3: TO-252</p> <p>(3) L: Lead Free, G: Halogen Free</p>
--	---



MARKING

TO-252	TO-92
 <p>Diagram showing the marking on a TO-252 package. The marking includes "UTC", "1N50Z", a small square, and a five-digit "Lot Code" (represented by five squares). A "Data Code" (represented by three squares) is also shown. The number "1" is at the bottom. Legend: L: Lead Free, G: Halogen Free.</p>	 <p>Diagram showing the marking on a TO-92 package. The marking includes "UTC", "1N50Z", a small square, and a three-digit "Data Code" (represented by three squares). The number "1" is at the bottom. Legend: L: Lead Free, G: Halogen Free.</p>

FLYING 汎翔國際有限公司
www.flying1688.com

■ ABSOLUTE MAXIMUM RATINGS ($T_C=25^\circ\text{C}$, unless otherwise specified)

PARAMETER		SYMBOL	RATINGS	UNIT
Drain-Source Voltage		V_{DSS}	500	V
Gate-Source Voltage		V_{GSS}	± 20	V
Drain Current	Continuous ($T_C=25^\circ\text{C}$)	I_D	1.3 (Note 2)	A
	Pulsed (Note 3)	I_{DM}	5 (Note 2)	A
Avalanche Current (Note 3)		I_{AR}	1.3	A
Avalanche Energy	Single Pulsed (Note 4)	E_{AS}	113	mJ
	Repetitive (Note 5)	E_{AR}	2.6	mJ
Power Dissipation	TO-92	P_D	40	W
	TO-252		45	
Derate above 25°C	TO-92		0.32	W/ $^\circ\text{C}$
	TO-252		0.36	
Junction Temperature		T_J	+150	$^\circ\text{C}$
Storage Temperature		T_{STG}	-55~+150	$^\circ\text{C}$

Notes: 1. Absolute maximum ratings are those values beyond which the device could be permanently damaged.

Absolute maximum ratings are stress ratings only and functional device operation is not implied.

2. Drain current limited by maximum junction temperature
3. Repetitive Rating: Pulse width limited by maximum junction temperature
4. $I_{SD} \leq 1.5\text{A}$, $di/dt \leq 200\text{A}/\mu\text{s}$, $V_{DD} \leq BV_{DSS}$, Starting $T_J = 25^\circ\text{C}$

■ THERMAL DATA

PARAMETER		SYMBOL	RATINGS	UNIT
Junction to Ambient	TO-92	θ_{JA}	160	$^\circ\text{C}/\text{W}$
	TO-252		110	
Junction to Case	TO-92	θ_{JC}	80	$^\circ\text{C}/\text{W}$
	TO-252		4.53	

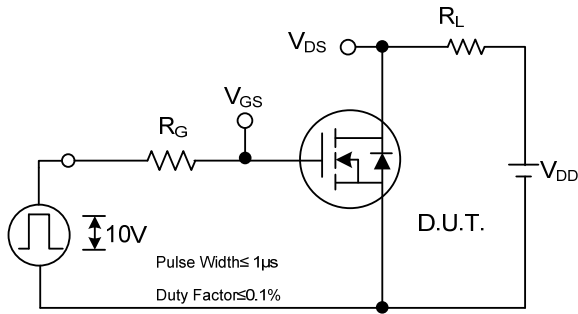
■ ELECTRICAL CHARACTERISTICS ($T_C=25^\circ\text{C}$, unless otherwise specified)

PARAMETER	SYMBOL	TEST CONDITIONS	MIN	TYP	MAX	UNIT
OFF CHARACTERISTICS						
Drain-Source Breakdown Voltage	BV_{DSS}	$I_D=250\mu\text{A}$, $V_{GS}=0\text{V}$	500			V
Drain-Source Leakage Current	I_{DSS}	$V_{DS}=500\text{V}$, $V_{GS}=0\text{V}$			1	μA
Gate- Source Leakage Current	Forward	I_{GSS}			+5	μA
	Reverse				-5	μA
ON CHARACTERISTICS						
Gate Threshold Voltage	$V_{GS(TH)}$	$V_{DS}=V_{GS}$, $I_D=250\mu\text{A}$	2.0		4.0	V
Static Drain-Source On-State Resistance	$R_{DS(ON)}$	$V_{GS}=10\text{V}$, $I_D=0.5\text{A}$		4.6	6.0	Ω
DYNAMIC PARAMETERS						
Input Capacitance	C_{ISS}	$V_{GS}=0\text{V}$, $V_{DS}=25\text{V}$, $f=1.0\text{MHz}$		220	290	pF
Output Capacitance	C_{OSS}			30	35	pF
Reverse Transfer Capacitance	C_{RSS}			11	13	pF
SWITCHING PARAMETERS						
Total Gate Charge	Q_G	$V_{GS}=10\text{V}$, $V_{DS}=50\text{V}$, $I_D=1.3\text{A}$ (Note 1, 2)		12.5	16	nC
Gate to Source Charge	Q_{GS}			3.2		nC
Gate to Drain Charge	Q_{GD}			2.7		nC
Turn-ON Delay Time	$t_{D(ON)}$	$V_{DD}=30\text{V}$, $I_D=0.5\text{A}$, $R_G=25\Omega$ (Note 1, 2)		20	35	ns
Rise Time	t_R			40	50	ns
Turn-OFF Delay Time	$t_{D(OFF)}$			70	90	ns
Fall-Time	t_F			48	60	ns
SOURCE- DRAIN DIODE RATINGS AND CHARACTERISTICS						
Maximum Body-Diode Continuous Current	I_S				1.3	A
Maximum Body-Diode Pulsed Current	I_{SM}				5	A
Drain-Source Diode Forward Voltage	V_{SD}	$I_S=1.3\text{A}$, $V_{GS}=0\text{V}$			1.15	V
Body Diode Reverse Recovery Time	t_{rr}	$I_S=1.5\text{A}$, $V_{GS}=0\text{V}$, $di_F/dt=100\text{A}/\mu\text{s}$ (Note 1)		130		ns
Body Diode Reverse Recovery Charge	Q_{RR}			0.32		μC

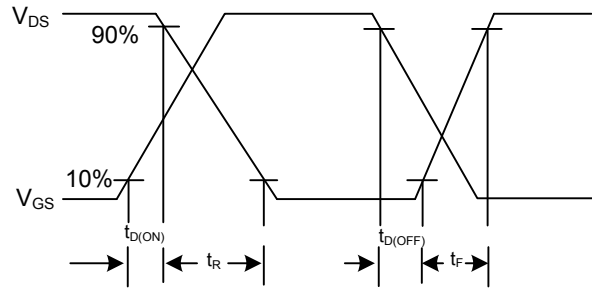
Notes: 1. Pulse Test: Pulse width $\leq 300\mu\text{s}$, Duty cycle $\leq 2\%$

2. Essentially independent of operating temperature

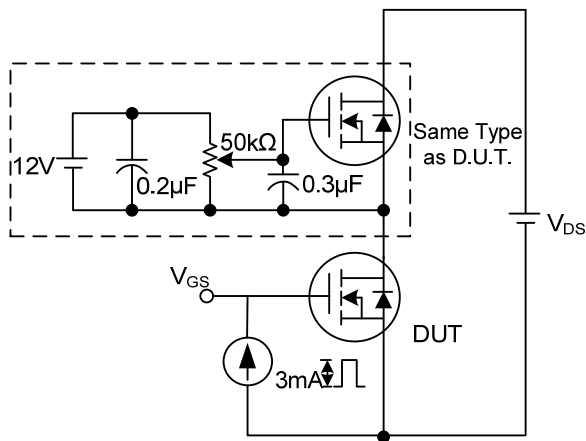
TEST CIRCUITS AND WAVEFORMS



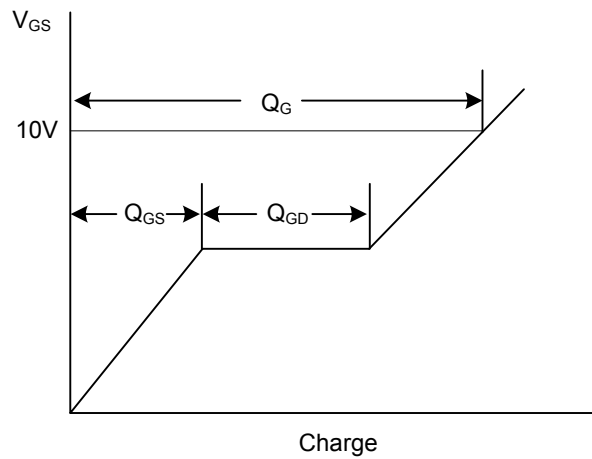
Switching Test Circuit



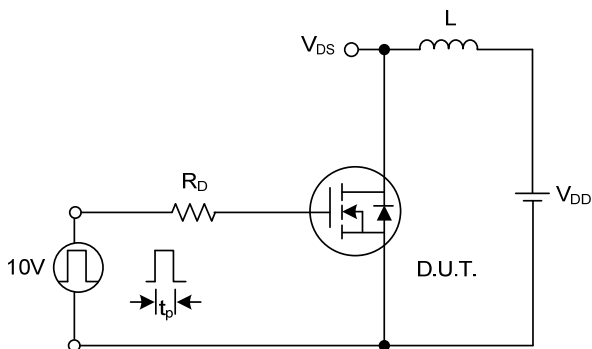
Switching Waveforms



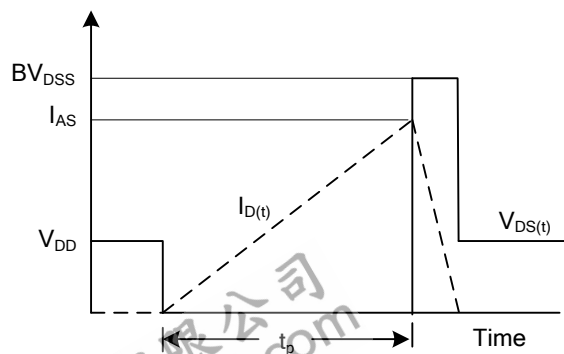
Gate Charge Test Circuit



Gate Charge Waveform

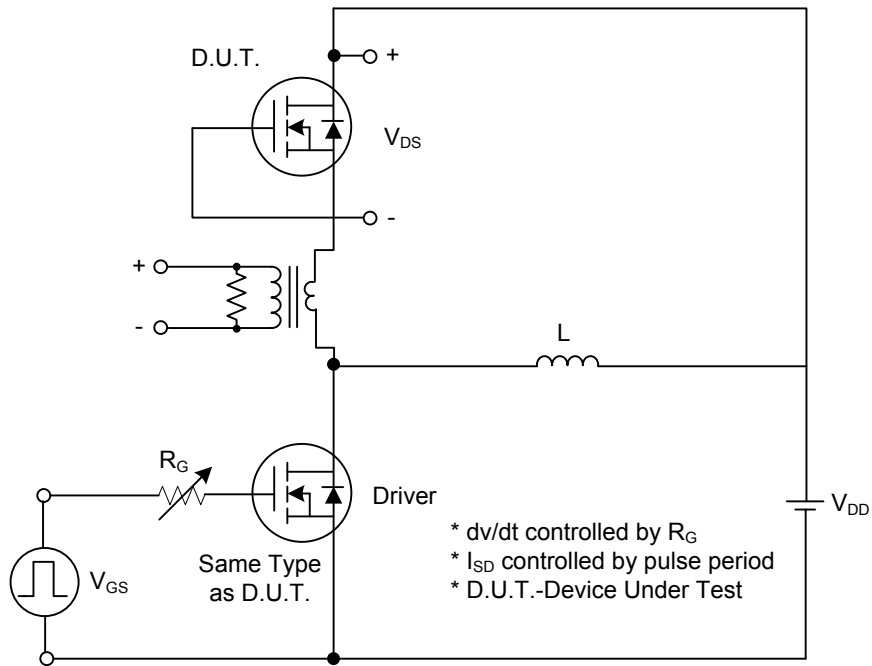


Unclamped Inductive Switching Test Circuit

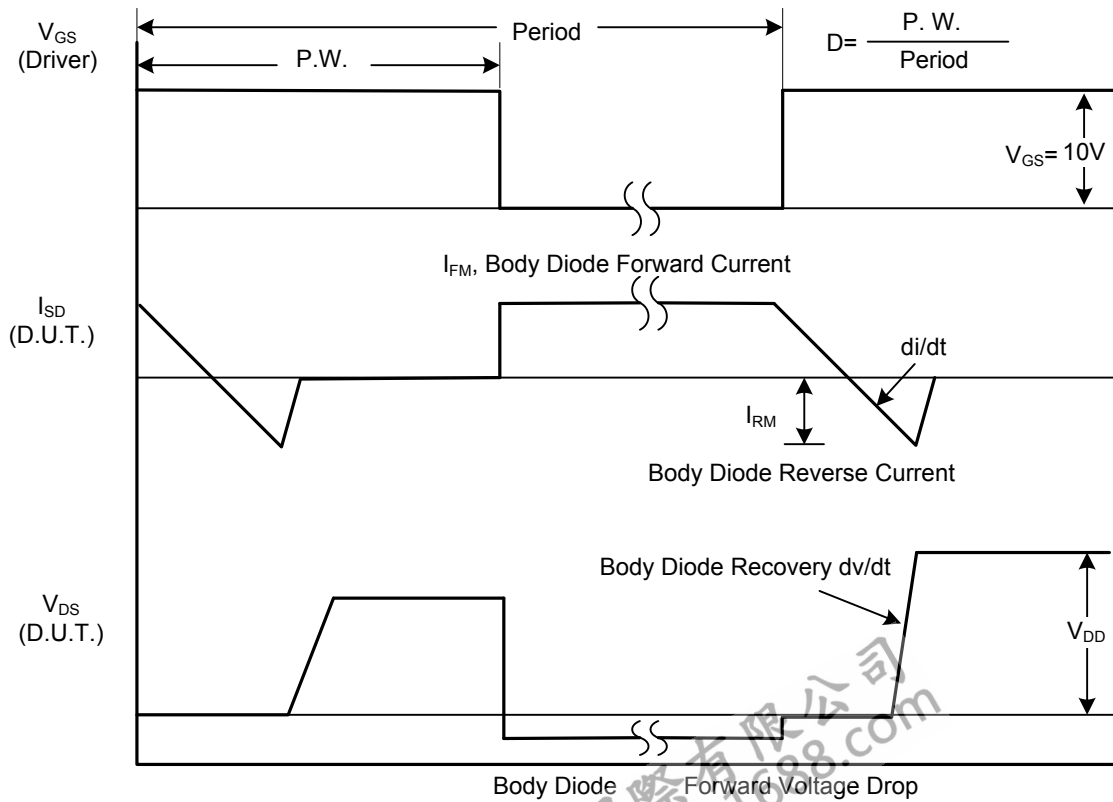


Unclamped Inductive Switching Waveforms

■ TEST CIRCUITS AND WAVEFORMS(Cont.)

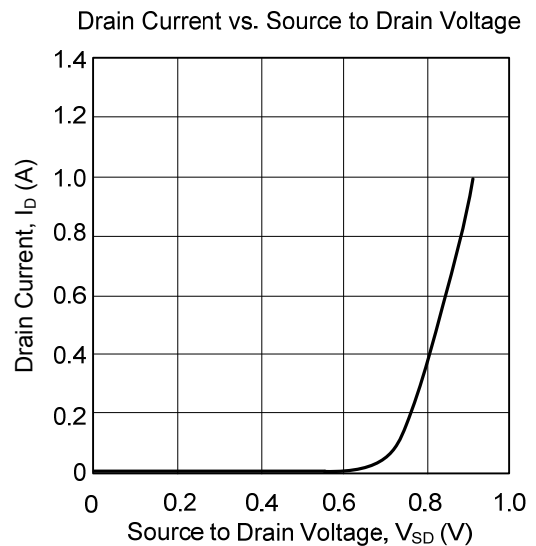
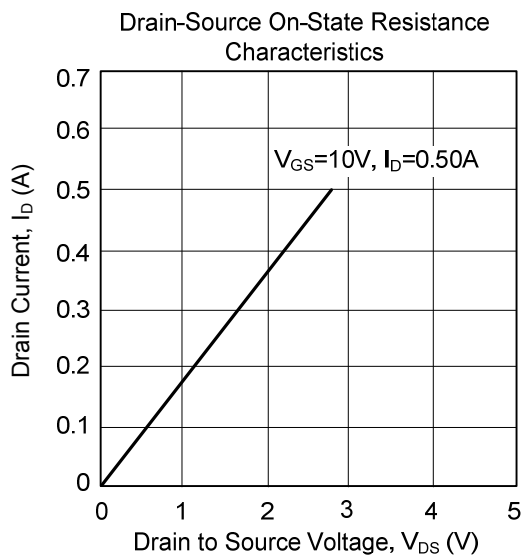
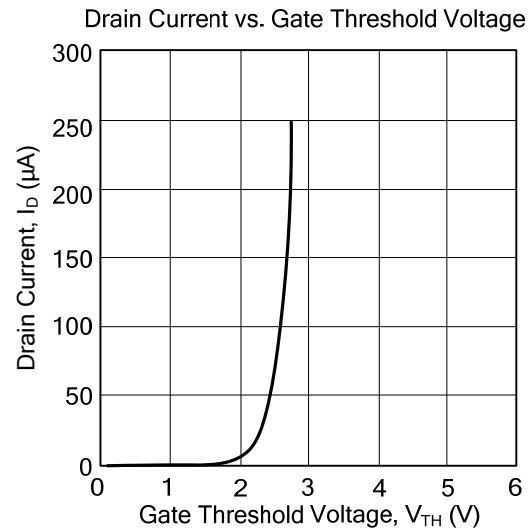
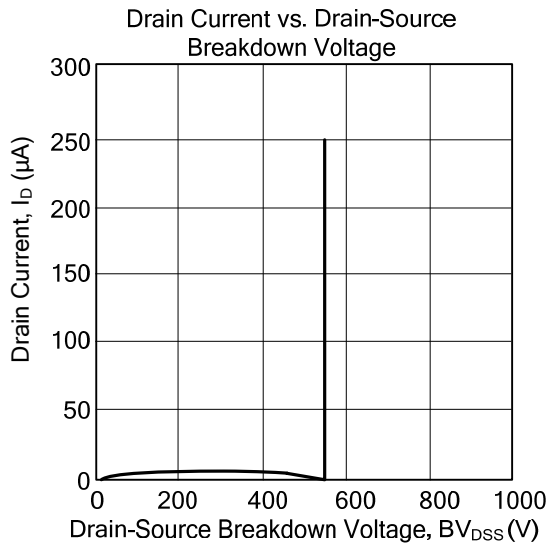


Peak Diode Recovery dv/dt Test Circuit



Peak Diode Recovery dv/dt Waveforms

TYPICAL CHARACTERISTICS



UTC assumes no responsibility for equipment failures that result from using products at values that exceed, even momentarily, rated values (such as maximum ratings, operating condition ranges, or other parameters) listed in products specifications of any and all UTC products described or contained herein. UTC products are not designed for use in life support appliances, devices or systems where malfunction of these products can be reasonably expected to result in personal injury. Reproduction in whole or in part is prohibited without the prior written consent of the copyright owner. The information presented in this document does not form part of any quotation or contract, is believed to be accurate and reliable and may be changed without notice.