



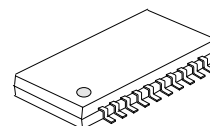
### FET BIAS CONTROLLER

#### DESCRIPTION

The UTC **L8002** is specially designed integrated circuit for satellite receiver front-end block. It provides stable drain and gate bias conditions for GaAs or HEMT FETs.

The UTC **L8002**, provide six FETs bias control respectively. By adjusting two internal resistors, it can change the FET's bias current to optimize the satellite receiver front end block performances.

It generates the required negative voltage to bias the gate of GaAs FET, and internally provides protection circuit that can protect the FET devices during supply voltage transient. So it is very popular in satellite receiver front end block.



SSOP-20(150mil)

#### FEATURES

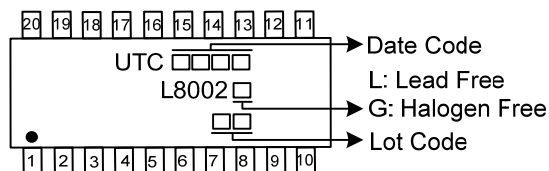
- \* Built in FET device protection circuit
- \* Stable bias control for GaAs and HEMT FETs
- \* Drive up to six FETs
- \* 2.5V supply voltage

#### ORDERING INFORMATION

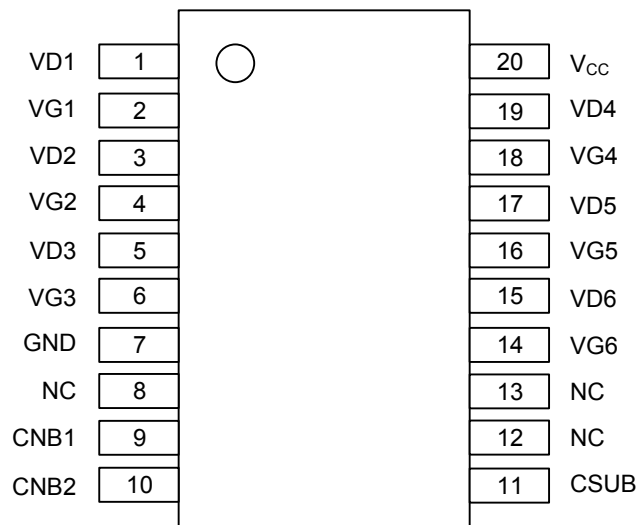
Ordering Number		Package	Packing
Lead Free	Halogen Free		
L8002L-R20-R	L8002G-R20-R	SSOP-20	Tape Reel

<p>L8002G-R20-R</p> <p>(1) Packing Type</p> <p>(2) Package Type</p> <p>(3) Green Package</p>	<p>(1) R: Tape Reel</p> <p>(2) R20: SSOP-20</p> <p>(3) G: Halogen Free and Lead Free, L: Lead Free</p>
--	--

#### MARKING



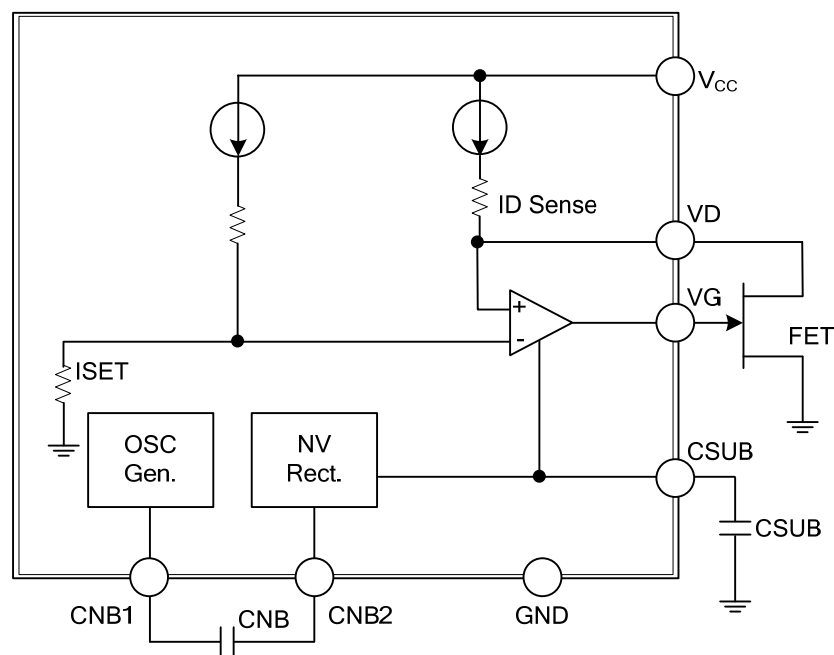
# ■ PIN CONFIGURATION



# ■ PIN DESCRIPTION

PIN NO.	PIN NAME	DESCRIPTION
1	VD1	1 <sup>st</sup> Drain output voltage
2	VG1	1 <sup>st</sup> Gate output voltage
3	VD2	2 <sup>nd</sup> Drain output voltage
4	VG2	2 <sup>nd</sup> Gate output voltage
5	VG3	3 <sup>rd</sup> Gate output voltage
6	VD3	3 <sup>rd</sup> Drain output voltage
7	GND	Ground
8	NC	No connect
9	CNB1	OSC output
10	CNB2	Rectifier Input
11	CSUB	Negative voltage output
12	NC	No connect
13	NC	No connect
14	VG6	6 <sup>th</sup> Gate output voltage
15	VD6	6 <sup>th</sup> Drain output voltage
16	VG5	5 <sup>th</sup> Gate output voltage
17	VD5	5 <sup>th</sup> Drain output voltage
18	VG4	4 <sup>th</sup> Gate output voltage
19	VD4	4 <sup>th</sup> Drain output voltage
20	V <sub>CC</sub>	Supply voltage

## ■ BLOCK DIAGRAM



# ■ ABSOLUTE MAXIMUM RATING

PARAMETER	SYMBOL	RATINGS	UNIT
Supply Voltage	$V_{CC}$	-0.6 ~ 3	V
Supply Current	$I_{CC}$	100	mA
Maximum Drain Current	$I_D$	15	mA
Maximum CSUB Sink Current	$I_{CSUB}$	-500	uA
Operating Temperature	$T_{OPR}$	-40 ~ +85	°C
Storage Temperature	$T_{STG}$	-50 ~ +125	°C

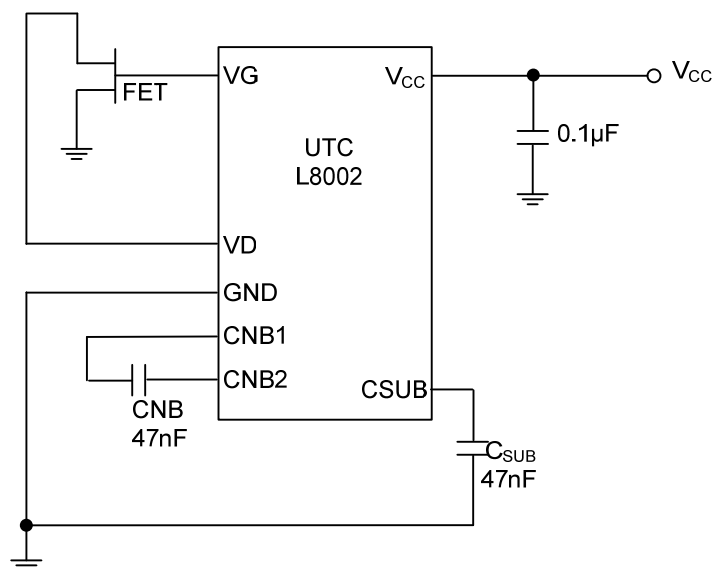
Note: Absolute maximum ratings are those values beyond which the device could be permanently damaged.  
Absolute maximum ratings are stress ratings only and functional device operation is not implied.

# ■ ELECTRICAL CHARACTERISTICS

( $V_{CC}=2.5V$ ,  $I_D=9.5mA$ ,  $T_A=25^{\circ}C$ , unless otherwise stated)

PARAMETER	SYMBOL	TEST CONDITIONS	MIN	TYP	MAX	UNIT
Supply Voltage	$V_{CC}$		2.375	2.5	2.625	V
Supply Current	$I_{CC}$	No FET		6	10	mA
Negative Voltage	$V_{SUB}$	$I_{SUB}=0uA$ , $V_{CC}=2.5V$		-2	-1	V
		$I_{SUB}=-200uA$			-1	V
Oscillator Freq.	$f_O$		300	450	800	KHz
Drain Current	$I_D$		8	9.5	12	mA
Drain Current Change with $V_{CC}$	$\Delta I_{DV}$	$V_{CC}=2.375V \sim 2.625V$		2		%/V
VD1/VD2/VD3/VD4/VD5/VD6 Drain Offset Current	$\Delta I_{DC}$			0.5		mA
Drain Current Change with Temp.	$\Delta I_{DT}$	$T=-40 \sim 85^{\circ}C$		0.5		%/°C
Drain Voltage	$V_D$	$I_D=9.5mA$	1.8	2	2.2	V
Drain Voltage Change with $V_{CC}$	$\Delta V_{DV}$	$V_{CC}=2.375V \sim 2.625V$		0.5		%/V
Drain Voltage Change	$\Delta V_{DT}$	$T=-40 \sim 85^{\circ}C$		100		ppm/°C
Dynamic Gate Voltage Range	$V_G$	Csub without loading	-2		0.7	V
Drain Output Noise Voltage	$V_{dn}$	With drain bypass capacitor=10nF			0.05	$V_{PP}$
Gate Output Noise Voltage	$V_{GN}$	With gate bypass capacitor=10nF			0.03	$V_{PP}$

# ■ TYPICAL APPLICATION CIRCUIT

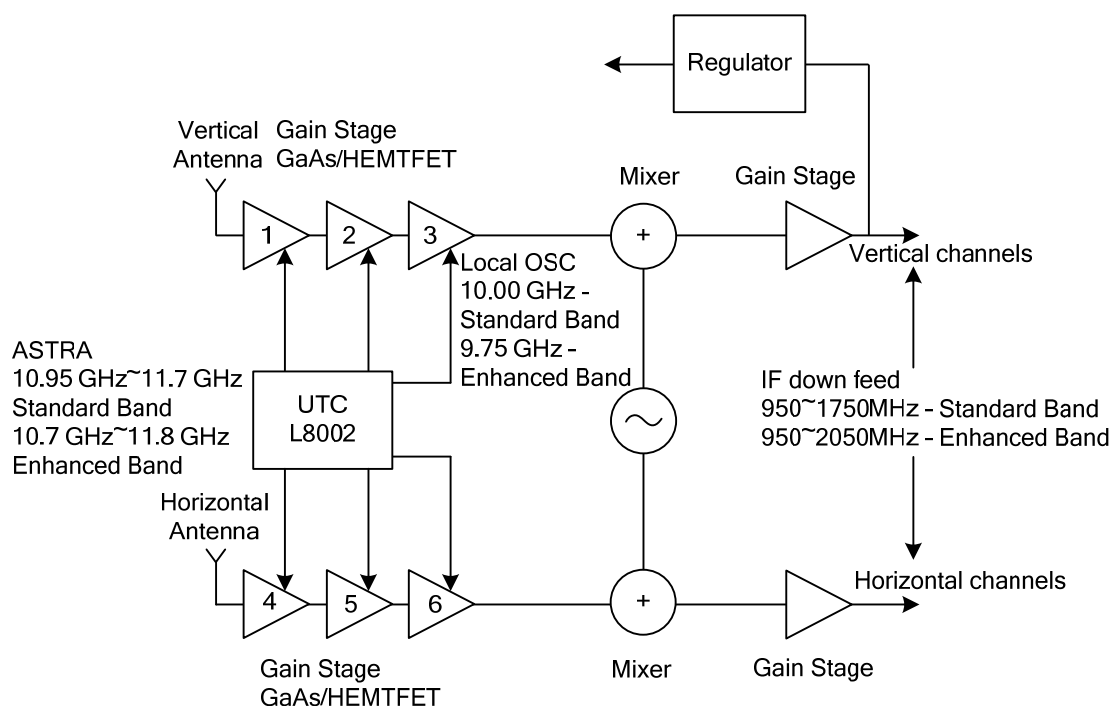


There are three major functions provided by UTC **L8002**: support negative voltage, bias control circuit, and FET protecting circuit.

The negative voltage is generated using internal oscillator. It only needs an ac coupled capacitor  $C_{NB}$  47nF and a negative voltage bypass capacitor  $C_{SUB}$  47nF.

The UTC **L8002** devices have been designed to protect the external FETs from adverse operating conditions. With a JFET connected to any bias circuit, the gate output voltage of the bias circuit can not exceed the range -2V to 0.7V, under any conditions including powerup and powerdown transients. Should the negative bias generator be shorted or overloaded so that the drain current of the external FETs can no longer be controlled, the drain supply to FETs is shut down to avoid damage to the FETs by excessive drain current. The following diagrams show the **L8002** in typical LNB applications. Within each FET gain stage the numbering system indicates how the bias stages relate to the application circuits.

■ TYPICAL APPLICATION CIRCUIT



UTC assumes no responsibility for equipment failures that result from using products at values that exceed, even momentarily, rated values (such as maximum ratings, operating condition ranges, or other parameters) listed in products specifications of any and all UTC products described or contained herein. UTC products are not designed for use in life support appliances, devices or systems where malfunction of these products can be reasonably expected to result in personal injury. Reproduction in whole or in part is prohibited without the prior written consent of the copyright owner. The information presented in this document does not form part of any quotation or contract, is believed to be accurate and reliable and may be changed without notice.