



佰鴻工業股份有限公司
Bright Led Electronics Corp.

Bright Home
佰鴻



Brighter World Brighter Life

更 明 亮 的 世 界 • 更 璀 璨 的 人 生



ISO/TS 16949



ISO 14001



About Bright Led Group

佰鴻工業成立於1981年，是一家具有三十多年生產銷售經驗的LED光電元件專業製造廠商，也是台灣知名的LED股票上市公司。

集團營運總部位在臺灣新北市，在香港、韓國首爾、美國加州等國外地區分別成立銷售分公司，同時也在世界各地建立了經銷代理網絡服務全球客戶。為了加強中國大陸市場的拓展，在中國地區成立了許多銷售通路及辦事處，進行LED照明光源及燈具的推廣及客戶服務。

主要生產基地在中國廣東東莞，主力產品包括數碼管、直插發光二極體、貼片發光二極體(SMD)、大功率LED、COB、紅外線產品及LED車燈、路燈、隧道燈、天井燈、投射燈、燈泡、燈管、平板燈、筒燈、號誌燈、全彩看板、植物生長燈等。藉由轉投資的藍寶石廠、LED晶片廠、支架PCB衝壓加工、及塑膠射出...等多家關係企業的垂直整合下，形成LED產業鏈，能提供最佳性價比的產品給客戶。

佰鴻工業擁有光、電、機、熱方面的專業研發團隊，開發LED在照明應用上的先進技術，提出四十多篇國內外專利申請。未來佰鴻工業將續以LED專業製造廠的角色，不斷地提供人類更節能、更環保、更變化的新世代照明。

Bright LED, funded in 1981, is a professional LED optoelectronic manufacturer and a well-known publicly listed LED company in Taiwan market for more than 30 years.

Bright LED group headquarter locates in New Taipei City, Taiwan. We have several sales branches in China, Hong Kong, Japan, Korea, Germany, Singapore, US and other countries as well. Meanwhile, Bright LED also establishes a long term relationship with distributors/dealers around the world to serve global customers with high efficiency and best solution.

In order to strengthen the expansion in China market, we also established offices within several districts of China to promote and sell LED products and to provide customer service.

Our main factory locates in China. Our main products include LED digits display, DIP LED, SMD, high-power LED, invisible, as well as, LED automotive lamps and LED lighting products ...etc. The Sapphire subsidiary, wafer factory, PCB assembly factory and other subsidiaries within Bright LED group formed our own upper, middle and lower stream of product supply chains and so contribute much reliable and best C/P products to customers.

Bright LED possesses the outstanding R&D team with their professions in lighting, electronic, electric, and heating areas. We constantly develop advanced technologies in LED field and as a result, we now have more than 40 local and international patents. Bright LED, as a role model of professional LED manufacturer, commits to provide better energy-saving, eco-friendly, and more diversified developments of LED in new era.



www.brtled.com

Total Solution



佰鴻一廠 / Bright LED Plant I
(LED元件 / Opto Components)



利盛 / Bright Rise Corp.
(電路板 / PCB, FPC)



佰鴻三廠 / Bright LED Plant III
(LED照明燈具 / LED Lighting)



佰鴻二廠 / Bright LED Plant II
(顯示器與LED模組
Display & LED Module)



億潤 / Yi-Run Electronics
Product Ltd.
(塑膠射出與金屬沖壓
Plastic Parts, Material)



晶鴻光電科技有限公司
Bright Crystal Company Limited.
(藍寶石 / Sapphire)



高輝 / Ko Brite Opto Tech Ltd.
(LED晶片 / LED Die)

Diversified Products

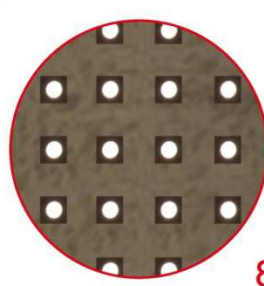
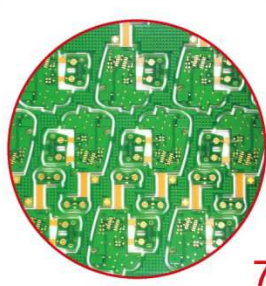
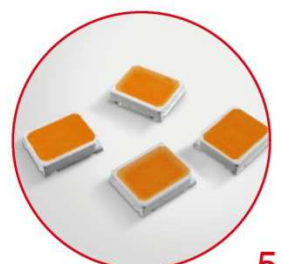
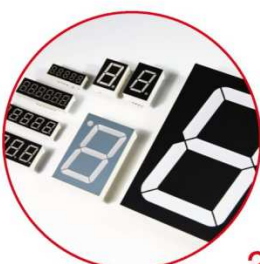
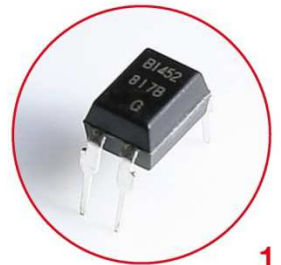
In Door Lighting



Out Door Lighting



Opto-electronic Components



- 1 Photo Coupler
- 2 Display LED
- 3 Invisible LED
- 4 Plastic Injection
- 5 SMD LED
- 6 Metal Stamping
- 7 PC Board
- 8 Dice

LED light tubes series



⊕ Product Features:

- Energy saving: Energy saving above 60%, compared to T8 fluorescent tubes with same specification.
- Environmental friendly: No ultraviolet radiation, no infrared radiation, and no stroboscope. Lead free, mercury free and comply with RoHS standard.
- Long life time: Aluminum alloy heat sink outer, well heat dissipation effect, continually usable above 25,000 hours.
- Applicable spaces: Boutique displays, book galleries, stations, parking lots, jewelry shelves, hotels, restaurants, ambient lighting, household lighting...
- Comply with CNS, UL, CE, CQC regulations.



The Difference of energy savings between LED tubes and fluorescent tubes under same luminance:

10W LED tubes ==20W fluorescent tubes
20W LED tubes ==40W fluorescent tubes

LED T5 TUBE SERIES

Product Specification:

Part no.	Input v	Power	Color temp.	lm	Length	Life time
BDT-9A2T5-xx	AC100-240V	9W	5700K	900lm	60cm	25,000hrs
BDT-18A4T5-xx	AC100-240V	18W	5700K	1800lm	120cm	25,000hrs

LED T8 TUBE SERIES

Product Specification:

Part no.	Input v	Power	Color temp.	lm	Length	Life time
BDT-9W2T8-xx-T	AC100-240V	9W	3000K	800lm	58cm	25,000hrs
BDT-18W4T8-xx	AC100-240V	18W	3000K	1600lm	120cm	25,000hrs
BDT-9A2T8-xx-T	AC100-240V	9W	5700K	900lm	58cm	25,000hrs
BDT-18A4T8-xx	AC100-240V	18W	5700K	1800lm	120cm	25,000hrs
BDT-9W2T8-xx-T	AC100-240V	9W	3000K	800lm	58cm	25,000hrs (no cutting)
BDT-18W4T8-xx	AC100-240V	18W	3000K	1600lm	120cm	25,000hrs (no cutting)
BDT-9A2T8-xx-T	AC100-240V	9W	5700K	900lm	60cm	25,000hrs (no cutting)
BDT-18A4T8-xx	AC100-240V	18W	5700K	1800lm	120cm	25,000hrs (no cutting)

Noted: the above parameters are standard numerical values. The actual delivery may have $\pm 10\%$ deviations! Please contact our sales for other detailed specifications.

⊕ Non-switchable LED tubes features:

full voltage: built-in switch power, which can be applicable within the range of AC100~240V full voltage.

90% compatibility: compatible with 90% of all kinds of ballasts; approved by legal third party testing.

Non removable ballast: when using ballast, the auto switch device helps ballast passing through bridge rectifier to drive LED lighting source. After the current was stabilized, the ballast' s regular movement can continually and stably light up.

Removed starter: use for electromagnetic ballasts after removing starter.

Invention patents: Taiwan and United states invention patents

LED Panel lights series (side LED lighting)



Light Rack Type



Hanging Type

⊕ Product Features:

- Low power consumption, energy saving and eco-friendly.
- Instant startup, no glares and no honking.
- No electromagnetic waves, no lead, and no mercury... etc hazardous substances.
- Comply with CNS, UL, CE, CQC regulations.



The difference of energy saving between LED panel lights and T8 fluorescent lights under same luminance:

35W LED Panel lights 60cmX60cm == 80W T8 4inch traditional fluorescent lights
 40W LED Panel lights 30cmX120cm == 80W T8 4inch traditional fluorescent lights
 70W LED Panel lights 60cmX120cm == 160W T8 4inch traditional fluorescent lights

Product Specification:

Part no.	Input v	Power	Color temp.	lm	Length	Life time
BPA-A35W6060-xx	AC100-240V	35W	3000K	3000lm	60* 60cm	25,000hrs
BPA-A40W30120-xx	AC100-240V	40W	3000K	3000lm	30*120cm	25,000hrs
BPA-A70W60120-xx	AC100-240V	70W	3000K	7000lm	60*120cm	25,000hrs
BPA-A35A6060-xx	AC100-240V	35W	6000K	3000lm	60* 60cm	25,000hrs
BPA-A40A30120-xx	AC100-240V	40W	6000K	3000lm	30*120cm	25,000hrs
BPA-A70A60120-xx	AC100-240V	70W	6000K	7000lm	60*120cm	25,000hrs

Product Figures:



60*60cm



30*120cm



60*120cm



Noted: the above parameters are standard numerical values. The actual delivery may have $\pm 10\%$ deviations! Please contact our sales for other detailed specifications.

LED Light Bulb Series



⊕Product Features:

- Fast heat dissipation..
- Environmental friendly: mercury free, no ultraviolet, no infrared and no flickering and no electromagnetic radiation. No harms to humans and no pollutions to environment.
- High purity: variety of color temperatures to choose from, high color rendering index and well color rendering.
- Easy installation: directly switch from regular candle lights.
- Comply with CNS, UL, CE, CQC regulations.





Comply with CNS
ecofriendly
acknowledgment

Product Specification:

Part no.	Input v	Power	Color temp.	lm	CRI	Lamp cap	Life time
BWLB-HB10Wxx-27K	AC100-240V	10W	2700K	850lm	Ra≥80	E27	25,000hrs
BWLB-HB10Axx-50K	AC100-240V	10W	5000K	1000lm	Ra≥80	E27	25,000hrs
BLB-HC35GHV01	AC100-240V	35W	白光+紅光		Ra≥80	E40	25,000hrs(plant growth light bulb)

Comparison among LED light bulb, traditional fluorescent light bulb (CFL) and incandescent light bulb:

3W LED light bulb = 8W CFL=25W incandescent light bulb
 5W LED light bulb =11W CFL=30W incandescent light bulb
 7W LED light bulb =15W CFL=40W incandescent light bulb
 10W LED light bulb =20W CFL=60W incandescent light bulb
 12W LED light bulb =26W CFL=100W incandescent light bulb



LED light bulb 3W

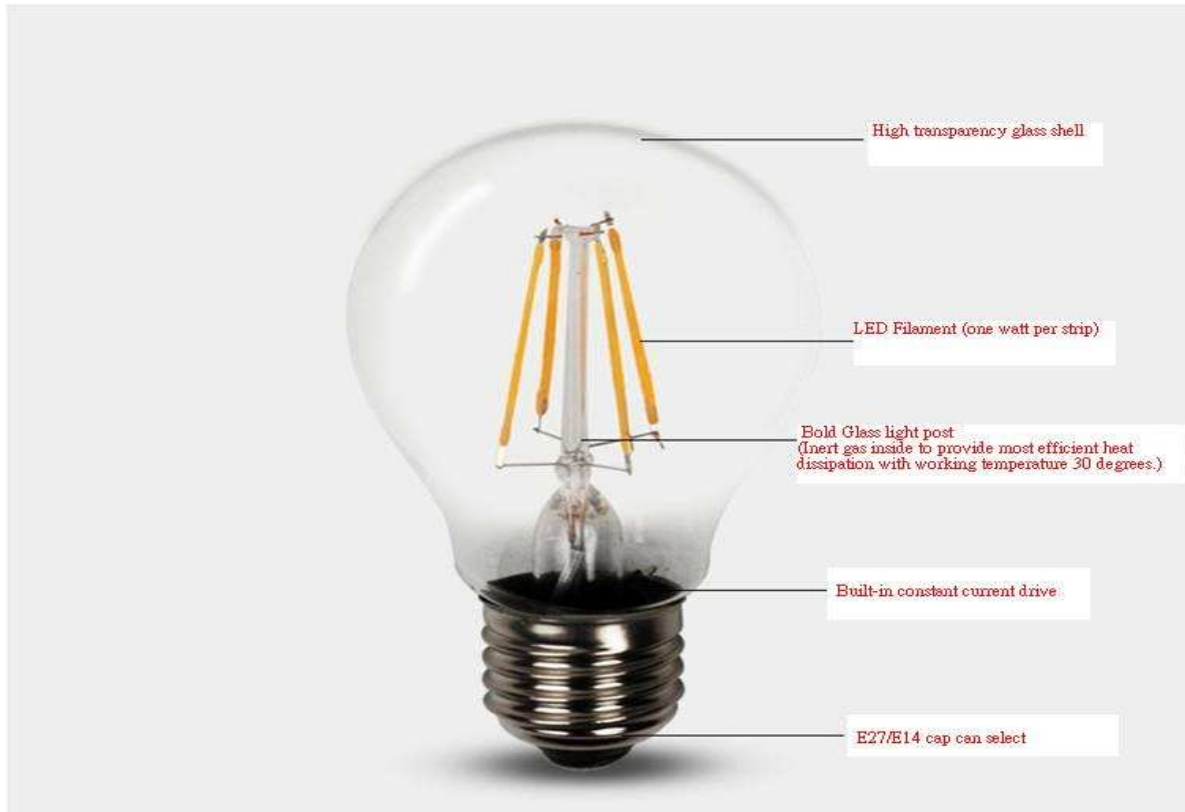
Illumination
=



Incandescent light bulb 25W

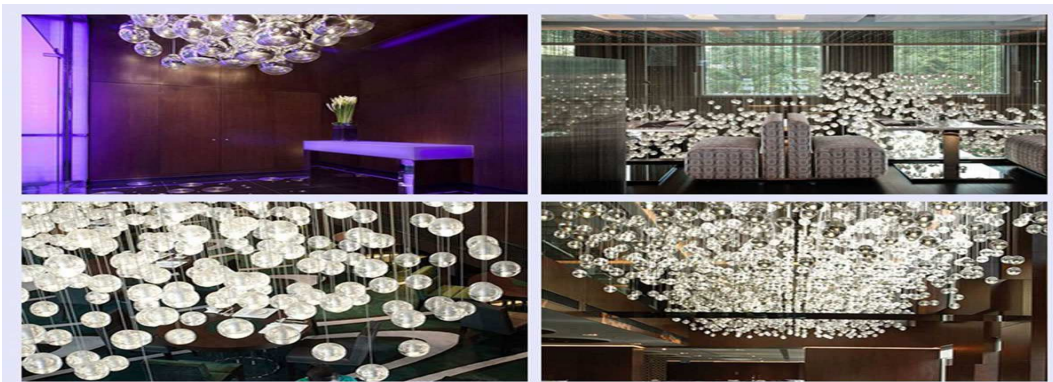
Noted: the above parameters are standard numerical values. The actual delivery may have ±10% deviations! Please contact our sales for other detailed specifications.

LED Filament Light Bulb Series



⊕ Product Features:

- Environmental friendly: mercury free, no ultraviolet, no infrared and no flickering and no electromagnetic radiation. No harms to humans and no pollutions to environment.
- High purity: variety of color temperatures to choose from, high color rendering index and well color rendering.
- Easy installation: directly switch from regular candle lights.
- LED filament with 360° molding creates high brightness, high luminous efficiency, high color rendering index and high reliability.
- Large beam angle ($\geq 270^\circ$)
- Feeling of original incandescent lighting environment but with much lower electricity costs.
- High voltage integrated circuit drives max. power factor with min. cost of light bulbs.
- Applicable spaces: conference room, hotels, residential, decorative indoor places.
- Comply with CNS, UL, CE, CQC regulations.





Product Specification:

Part no.	Input v	Power	Color temp.	lm	CRI	Lamp cap	Life time
BFB-E2A01GC-C	AC100-240V	1.8W	6000K	180lm	Ra≥80	E26/E27/E14	25,000hrs
BFB-E2W01GC-C27K	AC100-240V	1.8W	2700K	160lm	Ra≥80	E26/E27/E14	25,000hrs
BFB-F2A01GC-C	AC100-240V	1.8W	6000K	180lm	Ra≥80	E26/E27/E14	25,000hrs
BFB-F2W01GC-C27K	AC100-240V	1.8W	2700K	160lm	Ra≥80	E26/E27/E14	25,000hrs
BFB-E3A01GC-C	AC100-240V	3W	6000K	320lm	Ra≥80	E26/E27/E14	25,000hrs
BFB-E3W01GC-C27K	AC100-240V	3W	2700K	280lm	Ra≥80	E26/E27/E14	25,000hrs
BFB-K2A01FC-C	AC100-240V	2W	6000K	220lm	Ra≥80	E26/E27/E14	25,000hrs
BFB-K2W01FC-C27K	AC100-240V	2W	2700K	200lm	Ra≥80	E26/E27/E14	25,000hrs
BFB-K4A01FC-F (frosted)	AC100-240V	3.5W	6000K	320lm	Ra≥80	E26/E27/E14	25,000hrs
BFB-K4W01FC-F27K (frosted)	AC100-240V	3.5W	2700K	270lm	Ra≥80	E26/E27/E14	25,000hrs
BFB-A3A01DC-F (frosted)	AC100-240V	3W	6000K	260lm	Ra≥80	E26/E27/E14	25,000hrs
BFB-A3W01DC-F27K (frosted)	AC100-240V	3W	2700K	210lm	Ra≥80	E26/E27/E14	25,000hrs
BFB-A5A01DC-F (frosted)	AC100-240V	5W	6000K	440lm	Ra≥80	E26/E27/E14	25,000hrs
BFB-A5W01DC-F27K (frosted)	AC100-240V	5W	2700K	390lm	Ra≥80	E26/E27/E14	25,000hrs
BFB-A3A01DC-C	AC100-240V	3W	6000K	320lm	Ra≥80	E26/E27/E14	25,000hrs
BFB-A3W01DC-C27K	AC100-240V	3W	2700K	280lm	Ra≥80	E26/E27/E14	25,000hrs
BFB-A5A01DC-C	AC100-240V	5W	6000K	500lm	Ra≥80	E26/E27/E14	25,000hrs
BFB-A5W01DC-C27K	AC100-240V	5W	2700K	450lm	Ra≥80	E26/E27/E14	25,000hrs
BFB-J5W01DC-C22K	AC100-240V	4.5W	2200K	390lm	Ra≥80	E26/E27/E14	25,000hrs
BFB-C6A01DC-C	AC100-240V	6W	6000K	630lm	Ra≥80	E26/E27/E14	25,000hrs
BFB-C6W01DC-C27K	AC100-240V	6W	2700K	580lm	Ra≥80	E26/E27/E14	25,000hrs
BFB-C5A01DC-C	AC100-240V	5W	6000K	500lm	Ra≥80	E26/E27/E14	25,000hrs
BFB-C5W01DC-C27K	AC100-240V	5W	2700K	450lm	Ra≥80	E26/E27/E14	25,000hrs

Noted: the above parameters are standard numerical values. The actual delivery may have ±10% deviations!
Please contact our sales for other detailed specifications.

Noted: more variety of this LED filament light bulb products available in inquiry



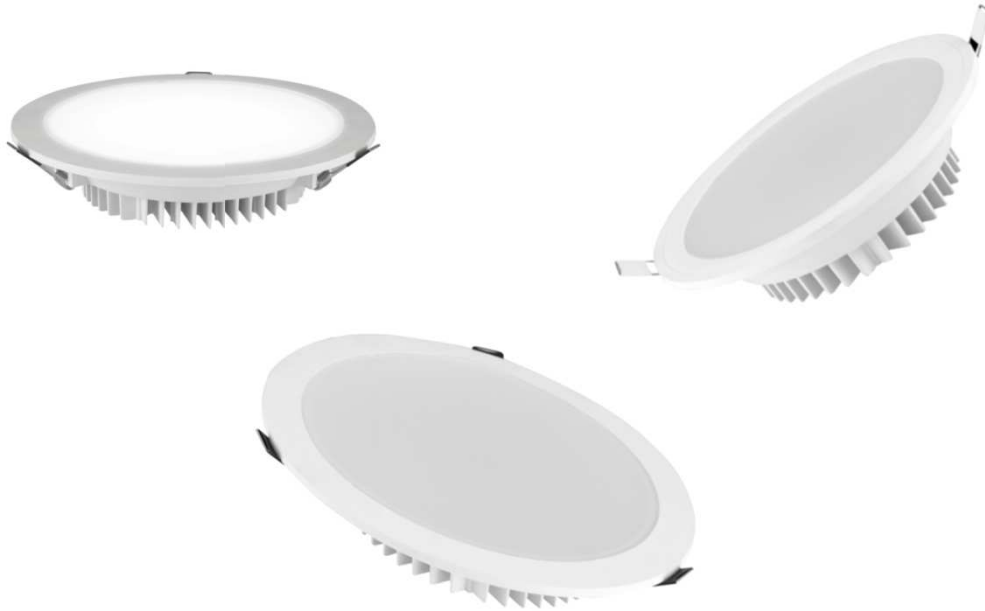
Electricity bill	Incandescent light bulb	Fluorescent light bulb	Regular LED light bulb	LED filament light bulb
Per day	0.36	0.11	0.06	0.02
Per week	2.52	0.77	0.42	0.14
Per month	10.8	3.41	1.86	0.70
Per year	131.4	40.15	21.9	8.40

Based on the scenario of lighting up 12 hours, electricity bill is 0.5 dollars. If light up 24 hours per day, will save up to \$246.00 dollars of electricity bill the whole year.

Noted: the above parameters are standard numerical values. The actual delivery may have $\pm 10\%$ deviations! Please contact our sales for other detailed specifications.

Noted: more variety of this LED filament light bulb products available in inquiry

LED down lights series



⊕ Product Features:

- AC power supply
- No heat radiation, no ultraviolet, no color fading and keep the products shine
- Environmental friendly, replace traditional lighting.
- Comply with CNS, UL, CE, CQC regulations.



Product Specification:

Part no.	Input v	Power	Color temp.	lm	CRI	Size	Life time
BLT-A10Wxx	AC100-240V	10W	3000K	800lm	Ra≥80	95mm	25,000hrs
BLT-A10Axx	AC100-240V	10W	6000K	800lm	Ra≥80	95mm	25,000hrs
BLT-A12Wxx	AC100-240V	12W	3000K	850lm	Ra≥80	150mm	25,000hrs
BLT-A12Axx	AC100-240V	12W	6000K	850lm	Ra≥80	150mm	25,000hrs
BLT-A12Wxx	AC100-240V	12W	3000K	850lm	Ra≥80	200mm	25,000hrs
BLT-A12Axx	AC100-240V	12W	6000K	850lm	Ra≥80	200mm	25,000hrs
BLT-A24Wxx	AC100-240V	24W	3000K	1700lm	Ra≥80	150mm	25,000hrs
BLT-A24Axx	AC100-240V	24W	6000K	1700lm	Ra≥80	150mm	25,000hrs
BLT-A35Wxx	AC100-240V	35W	3000K	2500lm	Ra≥80	200mm	25,000hrs
BLT-A35Axx	AC100-240V	35W	6000K	2500lm	Ra≥80	200mm	25,000hrs

Noted: the above parameters are standard numerical values. The actual delivery may have $\pm 10\%$ deviations! Please contact our sales for other detailed specifications.

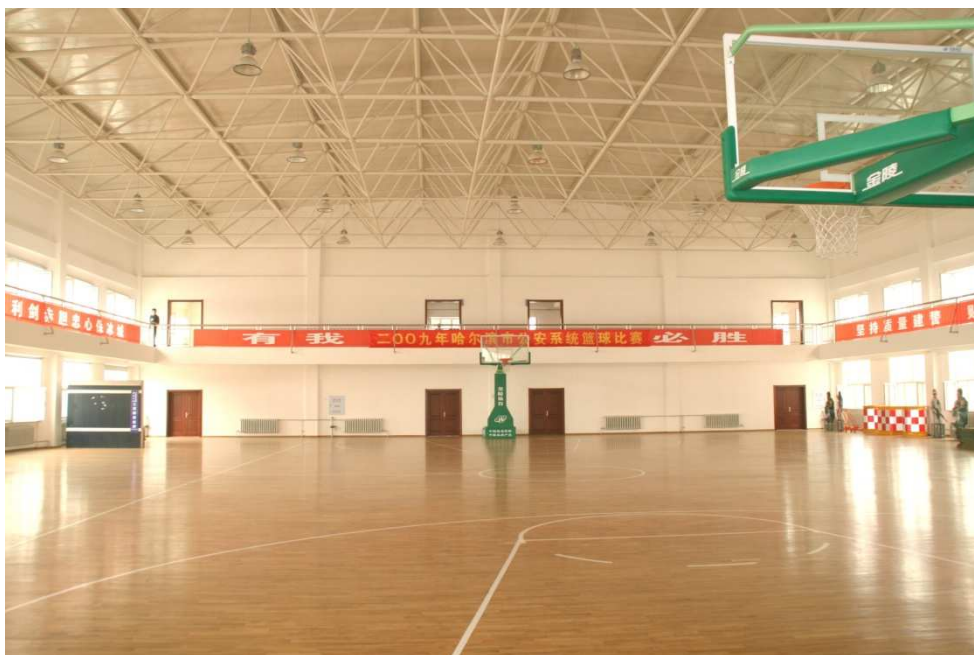


LED High bay series



⊗ Product Features:

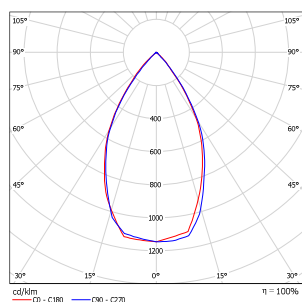
- Use high power LED chips and patented heat dissipation design to make sure its LED power is high, lumen depreciation is low and life time is 50,000 hours.
- Use constant current driving switchable power supply, AC100-277V full range input voltage.
- High power efficiency with power factor >0.9.
- Degree of protection: IP65.
- Comply with CNS, UL, CE, CQC regulations.
- Applicable spaces: factories, stations, storages, tollbooths, gas stations, exhibitions and galleries, gyms, industrial and mining areas...etc



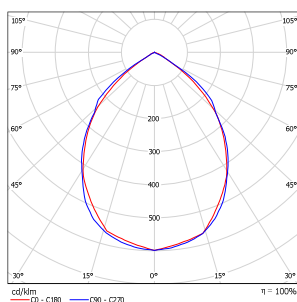
Product Specification:

Part no.	Input v	Power	lm	lm/w	Color temp.	Weight
BWK-60-CB	AC100-277V	60W	5400lm	≥90lm/w	3000-6000K	4.3KG
BWK-100-CB	AC100-277V	110W	9000lm	≥90lm/w	3000-6000K	5.3KG
BWK-120-CB	AC100-277V	120W	10800lm	≥90lm/w	3000-6000K	5.5KG
BWK-150-CB	AC100-277V	150W	13500lm	≥90lm/w	3000-6000K	5.5KG
BWK-200-CB	AC100-277V	200W	18000lm	≥90lm/w	3000-6000K	6.0KG
BWK-150-CY	AC100-277V	150W	13500lm	≥90lm/w	3000-6000K	8.5KG
BWK-200-CY	AC100-277V	200W	18000lm	≥90lm/w	3000-6000K	7.5KG
BWK-500-CY	AC100-277V	500W	40000lm	≥90lm/w	3000-6000K	7.5KG

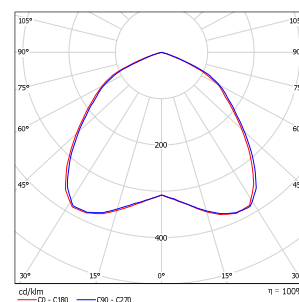
Luminous intensity distribution curve



60 degree
Of angle



90 degree
Of angle

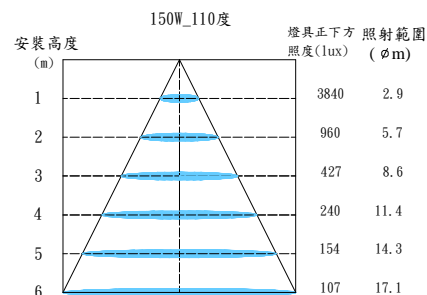
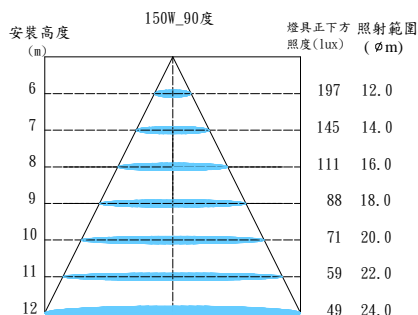
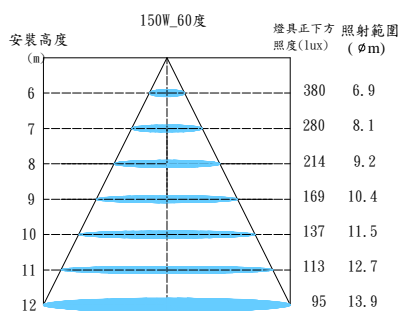


110 degree
of angle

High_bay

Low_bay

Equal illumination curve



Noted: the above parameters are standard numerical value. The actual delivery may have $\pm 10\%$ deviations!
Please contact our sales for other detailed specifications.

LED Floodlights series



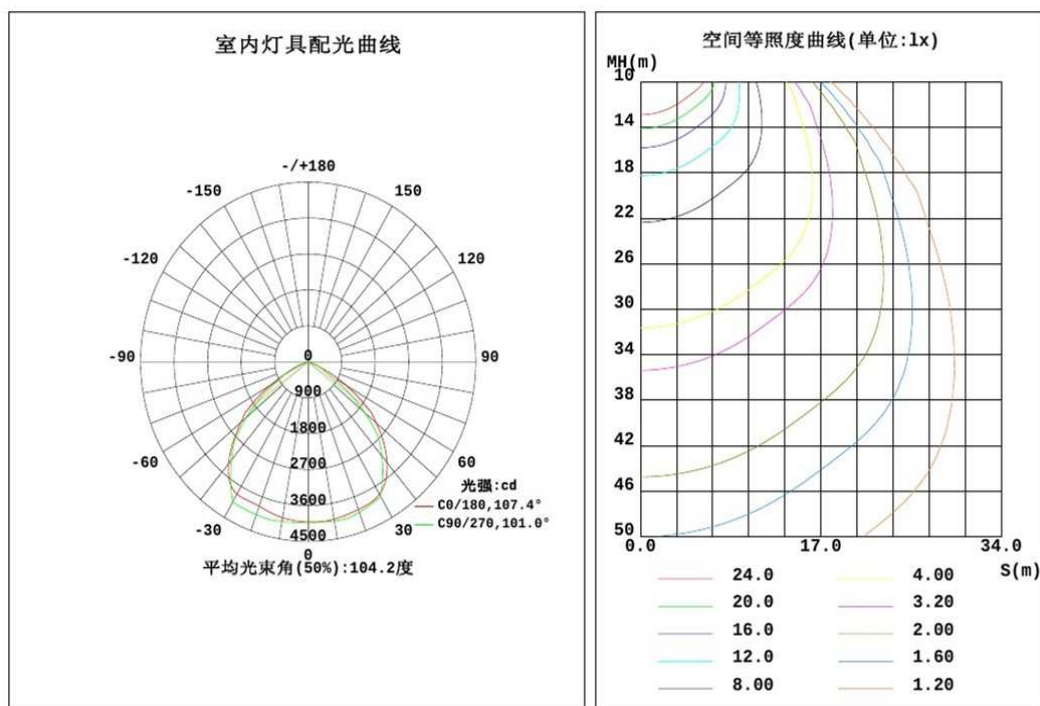
⊕ Product Features:

- Use high power LED chips and patented heat dissipation design to make sure its LED power is high, lumen depreciation is low and life time is 50,000 hours.
- Use constant current driving switchable power supply, AC100-277V full range input voltage.
- High power efficiency with power factor >0.9.
- Degree of protection: IP65.
- Comply with CNS, UL, CE and CQC regulations.
- Eco friendly aluminum alloy materials with strong resistance to corrosion
Nice tempered glass face covering with electrostatic paint spraying on its surfaces.
- Applicable spaces: stations, ports, construction, special machinery lighting as well as city lighting architectures, bridges, embankments, squares and gardens...etc.



Product Specification:

Part no.	Input v	Power	Color temp.	lm/w	lm	Size
BWLR-VP50A	AC100-277V	50W	5000K	>90 lm/W	4500lm	282*220*113mm
BWLR-VP50W	AC100-277V	50W	3000K	>90 lm/W	4500lm	282*220*113mm
BWLR-VP100A	AC100-277V	100W	5000K	>90 lm/W	9000lm	310*268*182mm
BWLR-VP100W	AC100-277V	100W	3000K	>90 lm/W	9000lm	310*268*182mm

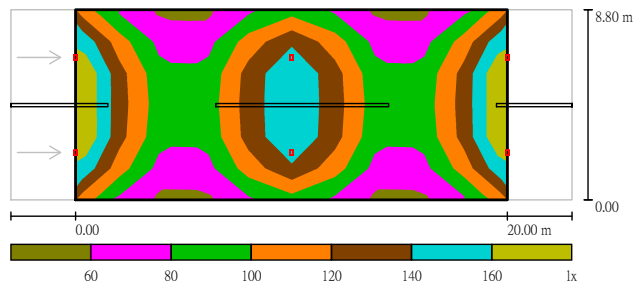
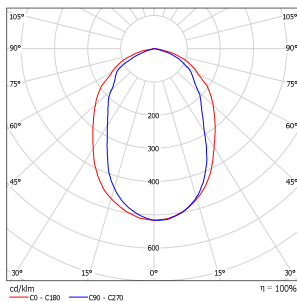
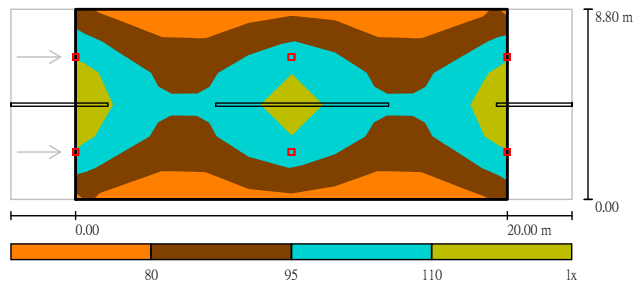
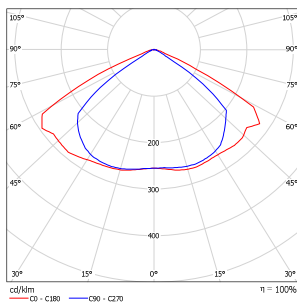


Noted: the above parameters are standard numerical value. The actual delivery may have $\pm 10\%$ deviations! Please contact our sales for other detailed specifications.

LED Tunnel lights series

⊗ Product Features:

- Use high power LED chips and patented heat dissipation design to make sure its LED power is high, lumen depreciation is low and life time is 50,000 hours.
- Use constant current driving switchable power supply, AC100-277V full range input voltage
- High power efficiency with power factor >0.9.
- Degree of protection: IP65.
- Comply with CNS, UL, CE, CQC regulations.





BWLR-MN40



RWI R-MN80



BWLR-MN120



BWLR-MN150

Product Specification:

Part no.	Input v	Power	Color temp.	lm/w	lm	Size
BWLR-MN30	AC100-277V	30W	3000K-5000K	>120 lm/W	3600lm	288*288*122mm
BWLR-MN40	AC100-277V	40W	3000K-5000K	>120 lm/W	4800lm	288*288*122mm
BWLR-MN60	AC100-277V	60W	3000K-5000K	>120 lm/W	7200lm	355*288*85mm
BWLR-MN80	AC100-277V	80W	3000K-5000K	>120 lm/W	9600lm	355*288*85mm
BWLR-MN100	AC100-277V	100W	3000K-5000K	>120 lm/W	12000lm	465*288*85mm
BWLR-MN120	AC100-277V	120W	3000K-5000K	>120 lm/W	14400lm	465*288*85mm
BWLR-MN150	AC100-277V	150W	3000K-5000K	>120 lm/W	18000lm	575*288*85mm
BWLR-MN180	AC100-277V	180W	3000K-5000K	>120 lm/W	21600lm	685*288*85mm
BWLR-MN200	AC100-277V	200W	3000K-5000K	>120 lm/W	24000lm	685*288*85mm
BWLR-MN240	AC100-277V	240W	3000K-5000K	>120 lm/W	28800lm	795*288*85mm

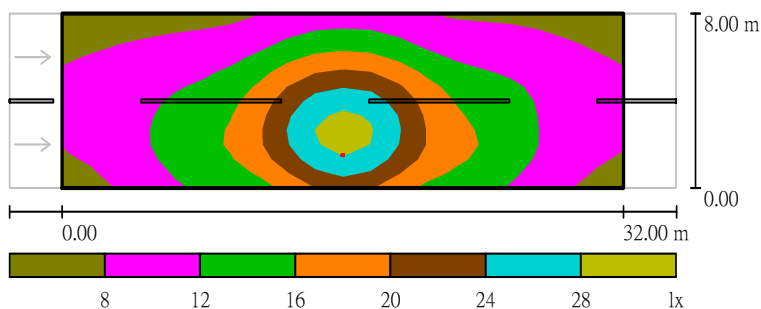
Noted: the above parameters are standard numerical value. The actual delivery may have $\pm 10\%$ deviations!
Please contact our sales for other detailed specifications.

LED Street lights series

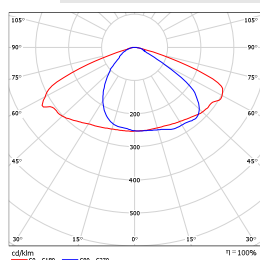


⊕ Product Features:

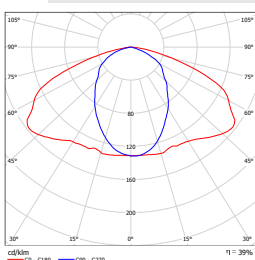
- Use high power LED chips and patented heat dissipation design to make sure its LED power is high, lumen depreciation is low and life time is 50,000 hours.
- Use constant current driving switchable power supply, AC100-277V full range input voltage
- High power efficiency with power factor >0.9.
- Degree of protection: IP65
- Comply with CNS, UL, CE, CQC regulations.



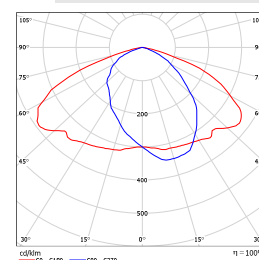
N IESNA Type II, Short



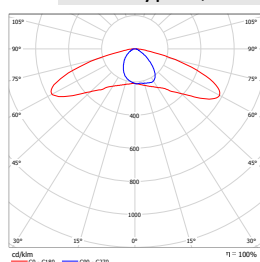
F IESNA Type I, Short



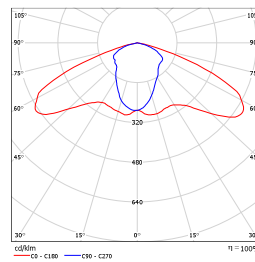
H IESNA Type II, Short



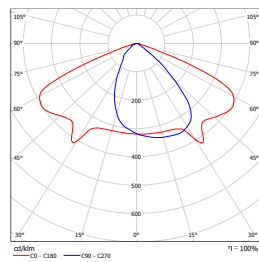
K IESNA Type II, Short



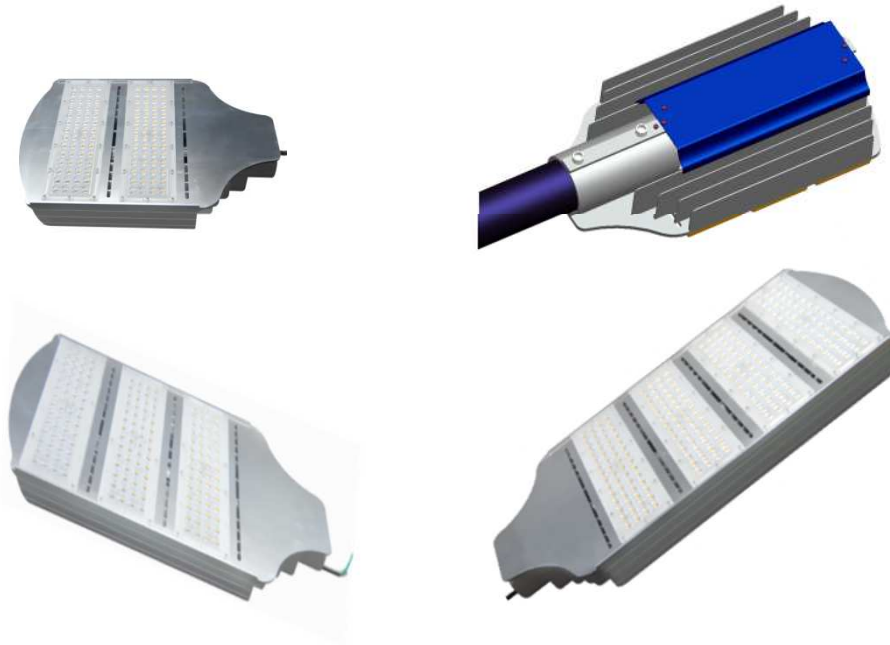
E IESNA Type II, Short



M IESNA Type II, Short



LED street lights series

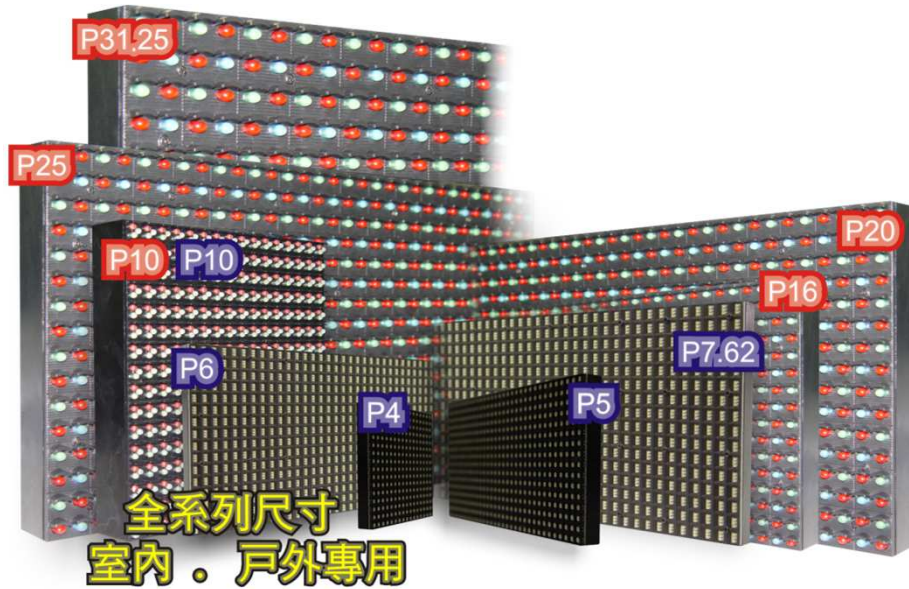


Product Specification:

Part no.	Input v	Power	Color temp.	lm/w	lm	Size
BWLR-QM35	AC100-277V	33W	3000K-5000K	>130 lm/W	4500lm	275*288*85mm
BWLR-QM55	AC100-277V	55W	3000K-5000K	>130 lm/W	7000lm	275*288*85mm
BWLR-QM90	AC100-277V	85W	3000K-5000K	>130 lm/W	11500lm	375*288*85mm
BWLR-QM110	AC100-277V	110W	3000K-5000K	>130 lm/W	13500lm	465*288*85mm
BWLR-QM120	AC100-277V	120W	3000K-5000K	>130 lm/W	15500lm	465*288*85mm
BWLR-QM150	AC100-277V	150W	3000K-5000K	>130 lm/W	19500lm	465*288*85mm
BWLR-QM200	AC100-277V	200W	3000K-5000K	>130 lm/W	26000lm	555*288*85mm
BWLR-QM240	AC100-277V	240W	3000K-5000K	>130 lm/W	31000lm	645*288*85mm

Noted: the above parameters are standard numerical value. The actual delivery may have $\pm 10\%$ deviations!
Please contact our sales for other detailed specifications.

LED Full Color Display series



⊗ Product Features:

- Full color , High luminance , cabinet design
- Customized design, such as dimmer, LED fail detector...etc.



(large-sized actual Case)

Display Area: 4.48 m(H) x 81.6 m(W)

Resolution: 224(H) X 4080(W) Dot



P25
東山/白河服務區



P20
國立板橋高中



P20
2009 世運會主場館



P20
弧形看板



P10
NCC國家通信傳撥委員會大樓



P6
成都漂亮生活KTV

Product Specification:

Part no.	Pitch	Pixel density	Brightness	Diver Mode	View angle
----------	-------	---------------	------------	------------	------------

Indoor Mode

BRT-MRGB0CA-2.5	2.54mm	155,000 dots/m ²	1200cd /m ²	Constant current driver 1/16Duty	X:160° / Y:160°
BRT-MRGB0CA-3	3.1mm	102,400 dots/m ²	1200cd /m ²	Constant current driver 1/16Duty	X:140° / Y:140°
BRT-MRGB0CA-4	4mm	62,500 dots/m ²	2000cd /m ²	Constant current driver 1/16Duty	X:100° / Y:100°
BRT-MRGB0CA-5	5mm	40,000 dots/m ²	3000cd /m ²	Constant current driver 1/8Duty	X:100° / Y:100°
BRT-MRGB0CA-6	6mm	27,777 dots/m ²	2500cd /m ²	Constant current driver 1/8Duty	X:100° / Y:100°
BRT-MRGB0CA-7.62	7.62mm	17,222 dots/m ²	2000cd /m ²	Constant current driver 1/8Duty	X:100° / Y:100°
BRT-MRGB0CA-10	10mm	10,000 dots/m ²	1500cd /m ²	Constant current driver 1/8Duty	X:100° / Y:100°

Outdoor Mode

BRT-MRGB3AB-10	10mm	10,000 dots/m ²	7000cd /m ²	Constant current driver 1/8Duty	X:110° / Y:55°
BRT-MRG5AB-16	16mm	3,906 dots/m ²	8000cd /m ²	Constant current driver Latch	X:110° / Y:70°
BRT-MRG5AB-20	20mm	2,500 dots/m ²	7500cd /m ²	Constant current driver Latch	X:110° / Y:70°
BRT-MRGB5AB-25	25mm	1,600 dots/m ²	6000cd /m ²	Constant current driver Latch	X:110° / Y:70°
BRT-MRGB5AB-31.25	31.25mm	1,024 dots/m ²	4500cd /m ²	Constant current driver Latch	X:110° / Y:70°

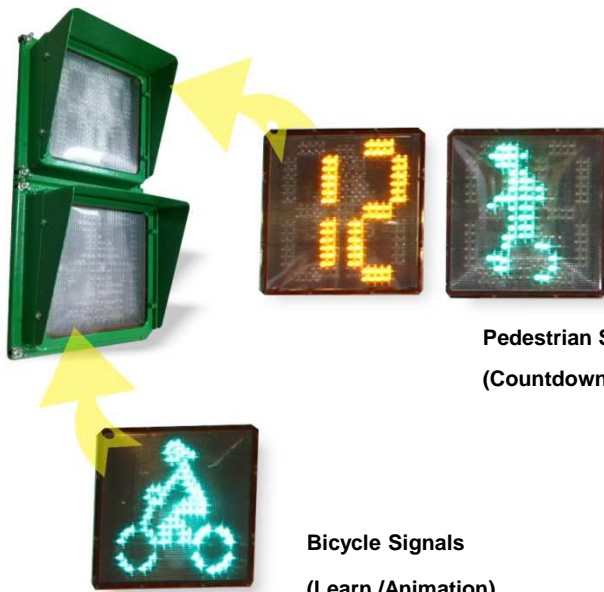
Noted: the above parameters are standard numerical value. The actual delivery may have ±10% deviations!
Please contact our sales for other detailed specifications.

LED Traffic Signals series



⊕Product Features:




- Certificates of GB 14887 - 2011 , CNS-14546 C7259, ITE , EN12368
- Customized design, such as dimmer, communication function controller...



Pedestrian Signals
(Countdown/Communication/Learn/Animation)

Bicycle Signals
(Learn /Animation)

Product Specification:

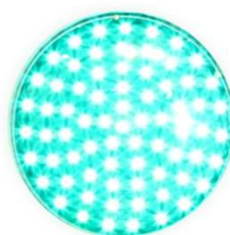
Part no.	Color	Dominant Wavelength	Dimensions	Luminance	Operating Voltage.	Power Consumption
Pedestrian Signals						
BRT-TRARYG3B5-05		625/590	200mm	1200cd/m ²	AC80-135V	≤ 15W
BRT-TRARYG3B5-06		590	200mm	1200cd/m ²	AC80-135V	≤ 15W
Bicycle Signals						
BRT-RG-01		500/625	200mm	1200cd/m ²	AC80-135V	≤ 15W



200 / 300 / 400mm
Ball Signals



200 / 300 / 400mm
Ball Signals



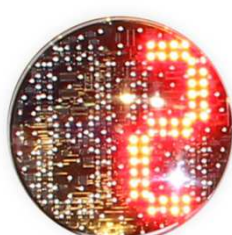
200 / 300 / 400mm
Ball Signals



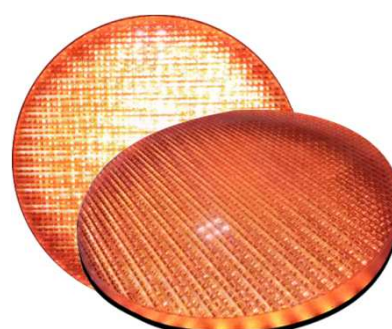
200 / 300 mm
Arrow Signals



300mm RGY 3 in 1 Ball Signals



300mm Yellow Ball Signals
with Countdown Display



400mm optical Ball Signals

Product Specification:

Part no.	Color	Dominant Wavelength	Dimensions	Luminous Intensity/Luminance	Operating Voltage	Power Consumption
Ball Signals						
BRT-TB8R3W8-01	Red	625	200mm	200cd	AC85-265V	≤ 12W
BRT-TB8Y3W8-01	Yellow	590	200mm	200cd	AC85-265V	≤ 12W
BRT-TB8G3W8-01	Green	500	200mm	200cd	AC85-265V	≤ 12W
BRT-TBCR1W8-BC	Red	625	300mm	400cd	AC80-135V	≤ 12W
BRT-TBCY1W8-AC	Yellow	590	300mm	400cd	AC80-135V	≤ 18W
BRT-TBCG1W8-BC	Green	500	300mm	400cd	AC80-135V	≤ 15W
BRT-TBGR3W8-JG	Red	625	400mm	800cd	AC85-265V	≤ 20W
BRT-TBGY3W8-JG	Yellow	590	400mm	800cd	AC85-265V	≤ 20W
BRT-TBGG3W8-JG	Green	500	400mm	800cd	AC85-265V	≤ 20W
Arrow Signals						
BRT-TB8AG3W8-01	Green	500	200mm	1200cd/m ²	AC85-265V	≤ 12W
BRT-TBCAG1W8	Green	500	300mm	4000cd/m ²	AC80-135V	≤ 10W
RGY 3 in 1 Ball Signals						
BRT-TBCRYG3W8	Red, Yellow, Green	625/590/500	300mm	400cd	AC85-265V	≤ 20W
Ball Signals with Countdown						
BRT-TBCRY3W8-01	88	590	300mm	400cd	AC85-265V	≤ 20W

Noted: the above parameters are standard numerical value. The actual delivery may have ±10% deviations!
Please contact our sales for other detailed specifications.

LED Solar Power Street Lights Series

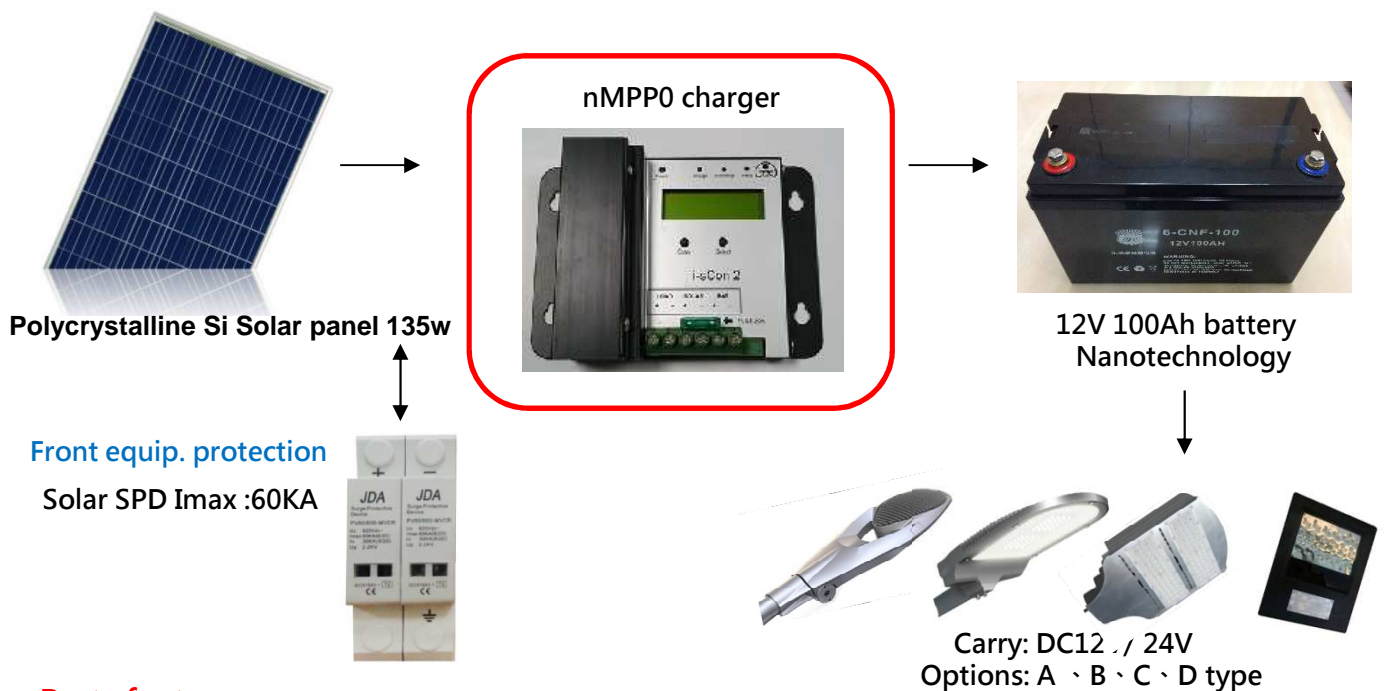
Set up parameters:

Types	A type	B type	C type	D type
Total luminous	3,600 lm	3,600 lm	5,400 lm	3,400 lm
Set up height	≤5m	≤5m	≤5m	≤5m
Angle of inclination	15°	15°	15°	15°
Outreach distance	1m	1m	1m	1m
Avg. illumination	≥30lux	≥30lux	≥35lux	≥25lux

Features:

- Combining solar-power and LED lighting source to increase energy saving benefit.
- Weather resistance and solid structure design aids to extend the product life span.
- Original Si battery design, which increases charging-discharging efficiency tremendously.
- Warranty for whole package including Si battery is 3 years which increases the economic efficiency of equipment.
- nMPP0 charger. Optional ATS is available.
- Discharging 8 hrs at night. When duration of day is poor, night beamy can last in 3 days without any concerns.

System structure:



Parts features:

Solar Panel	Output rating 135w
Solar panel efficacy	Guarantee 20 years+, Still maintain 80% efficacy
nMPP0 charger	Conversion efficiency above 90%

nMPP0 charger	Direct drive LED technique, three staged charging, overload protection
LED lamps	High efficacy 30w~60w, lighting effect ≥ 90lm/w
Battery	Original design, life span can be 5 years above.



佰鴻工業股份有限公司
Bright Led Electronics Corp.

佰鴻總部 Corporate Headquarter

地址：台灣新北市板橋區和平路19號3樓

Add : 3F, No.19, Ho Ping Road, Banqiao District,
New Taipei City, Taiwan, ROC

電話 (Tel) : +886-2-2959-1090

傳真 (Fax) : +886-2-2954-7006

網址 : <http://www.brtled.com>

郵箱 (E-mail) : service@brtled.com

東莞工廠 Dongguan Factory

地址：廣東省東莞市高埗鎮高龍東路8號

Add : No.8, Gao Long Road, Gao Bu Town, Dong Guan City,
Guang Dong Province China

電話 (Tel) : +86-0769-8873-1855

傳真 (Fax) : +86-0769-8873-3355

佰旺科技園 Bright Wonder industrial park

地址：廣東省東莞市高埗鎮三聯村佰旺科技園

Add : The Bright Wonder Industrial Park, San Lian Village,
Gao Bu Town, Dong Guan City, Guang Dong Province China

電話 (Tel) : +86-0769-8870-5855

傳真 (Fax) : +86-0769-8870-9098

LED MR16燈系列



5W



6W

產品規格 Product Specification:

產品型號	LED光束角	輸入電壓	功率	色溫	光通量	顯色指數	燈頭	工作壽命
Part no.	Field angle	Input v	Power	Color temp.	lm	CRI	Lamp cap	Life time
LMR-W001	30度	AC/DC 12V	5W	3000K	350lm	Ra≥80	GU5.3	10,000hrs
LMR-W002	30度	AC/DC 12V	6W	3000K	450lm	Ra≥80	GU5.3	10,000hrs

LED MR16軌道燈系列

LTL-W001
LTL-W002

燈具尺寸：L80mm W60mm H150mm

光源規格：5W MR16 or 6W MR16

燈具材質：鐵+烤漆

LTL-W003
LTL-W004

燈具尺寸：L90mm W50mm H130mm

光源規格：5W MR16 or 6W MR16

燈具材質：鐵+烤漆

註：上述參數數值為典型值，實際交貨有±10%誤差！

Noted: the above parameters are standard numerical value. The actual delivery may have ±10% deviations!
Please contact our sales for other detailed specifications.

LED MR16燈系列



5W



6W

產品規格 Product Specification:

產品型號	LED光束角	輸入電壓	功率	色溫	光通量	顯色指數	燈頭	工作壽命
Part no.	Field angle	Input v	Power	Color temp.	lm	CRI	Lamp cap	Life time
LMR-W001	30度	AC/DC 12V	5W	3000K	350lm	Ra≥80	GU5.3	10,000hrs
LMR-W002	30度	AC/DC 12V	6W	3000K	450lm	Ra≥80	GU5.3	10,000hrs

LED MR16盒燈系列



LBL-W101 LBL-W102

燈具尺寸：L135mm W135mm H76mm

開孔大小：120mm x 120mm

光源規格：5W MR16x1 or 6W MR16x1

燈具材質：鋼鐵+烤漆



LBL-W201 LBL-W202

燈具尺寸：L240mm W135mm H76mm

開孔大小：225mm x 120mm

光源規格：5W MR16x2 or 6W MR16x2

燈具材質：鋼鐵+烤漆



LBL-W301 LBL-W302

燈具尺寸：L345mm W135mm H76mm

開孔大小：330mm x 120mm

光源規格：5W MR16x3 or 6W MR16x3

燈具材質：鋼鐵+烤漆



LBL-W401 LBL-W402

燈具尺寸：L240mm W240mm H76mm

開孔大小：225mm x 225mm

光源規格：5W MR16x4 or 6W MR16x4

燈具材質：鋼鐵+烤漆

註：上述參數數值為典型值，實際交貨有±10%誤差！

Noted: the above parameters are standard numerical value. The actual delivery may have ±10% deviations!
Please contact our sales for other detailed specifications.

LED AR111燈系列



12W



15W

產品規格 Product Specification:

產品型號	LED光束角	輸入電壓	功率	色溫	光通量	顯色指數	工作壽命
Part no.	Field angle	Input v	Power	Color temp.	lm	CRI	Life time
LAR-W001	25度	AC100-240V	12W	3000K	950lm	Ra≥80	20,000hrs
LAR-W002	25度	AC100-240V	15W	3000K	1250lm	Ra≥80	20,000hrs

LED AR111軌道燈系列

LTL-W005
LTL-W006

燈具尺寸：L140mm W115mm H180mm

光源規格：12W AR111 or 15W AR111

燈具材質：鐵+烤漆

LTL-W007
LTL-W008

燈具尺寸：L50mm W115mm H155mm

光源規格：12W AR111 or 15W AR111

燈具材質：鋁+烤漆

註：上述參數數值為典型值，實際交貨有±10%誤差！

Noted: the above parameters are standard numerical value. The actual delivery may have ±10% deviations!
Please contact our sales for other detailed specifications.

LED AR111燈系列



12W



15W

產品規格 Product Specification:

產品型號	LED光束角	輸入電壓	功率	色溫	光通量	顯色指數	工作壽命
Part no.	Field angle	Input v	Power	Color temp.	lm	CRI	Life time
LAR-W001	25度	AC100-240V	12W	3000K	950lm	Ra≥80	20,000hrs
LAR-W002	25度	AC100-240V	15W	3000K	1250lm	Ra≥80	20,000hrs

LED AR111盒燈系列



LBL-W103 LBL-W104

燈具尺寸：L182mm W182mm H85mm

開孔大小：170mm x 170mm

光源規格：12W AR111x1 or 15W AR111x1

燈具材質：鋼鐵+烤漆



LBL-W203 LBL-W204

燈具尺寸：L332mm W182mm H85mm

開孔大小：170mm x 315mm

光源規格：12W AR111x2 or 15W AR111x2

燈具材質：鋼鐵+烤漆



LBL-W303 LBL-W304

燈具尺寸：L482mm W182mm H85mm

開孔大小：170mm x 465mm

光源規格：12W AR111x3 or 15W AR111x3

燈具材質：鋼鐵+烤漆



LBL-W403 LBL-W404

燈具尺寸：L330mm W330mm H85mm

開孔大小：315mm x315mm

光源規格：12W AR111x4 or 15W AR111x4

燈具材質：鋼鐵+烤漆

註：上述參數數值為典型值，實際交貨有±10%誤差！

Noted: the above parameters are standard numerical value. The actual delivery may have ±10% deviations!
Please contact our sales for other detailed specifications.

LED 緊急避難燈

壁掛、吸頂皆適用



LSP-A101

產品規格 Product Specification:

產品型號	燈具等級	電池規格	材質	額定功率	顯示面尺寸	輸入電壓
Part no.	Level	Battery spec.	Material	Power	Screen size	Input v
LSP-A101	C級	鎳鎘3.6V400mAh	合金鋁	3W	360mm x 120mm	AC110/220V

面板類型3:1



以下四款面板類型無消防署認可



壁掛、吸頂皆適用



LSP-A103

產品規格 Product Specification:

產品型號	燈具等級	電池規格	材質	額定功率	顯示面尺寸	輸入電壓
Part no.	Level	Battery spec.	Material	Power	Screen size	Input v
LSP-A103	C級	鎳鎘3.6V400mAh	防火塑膠PVC	3W	360mm x 120mm	AC110/220V

面板類型3:1



以下四款面板類型無消防署認可



壁掛、吸頂皆適用

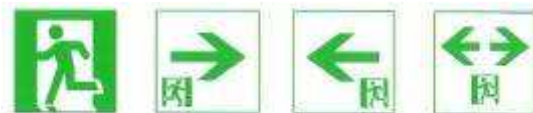


LSP-A102

產品規格 Product Specification:

產品型號	燈具等級	電池規格	材質	額定功率	顯示面尺寸	輸入電壓
Part no.	Level	Battery spec.	Material	Power	Screen size	Input v
LSP-A102	C級	鎳鎘3.6V300mAh	防火塑膠PVC	2W	130mm x 130mm	AC110/220V

面板類型1:1



註：上述參數數值為典型值，實際交貨有±10%誤差！

Noted: the above parameters are standard numerical value. The actual delivery may have ±10% deviations!
Please contact our sales for other detailed specifications.

LED 緊急照明燈



LSP-A104

產品規格 Product Specification:

產品型號	電池規格	光源規格	LED顆數	充電時間	照明時間	規格尺寸(CM)	壁掛孔距
Part no.	Battery spec.	LED spec.	LEDs	Charging time	Working time	Size	Distance
LSP-A104	鎳鎘3.6V700mAh	2.24W	32顆	48小時	90分鐘以上	L9xW4.25xH16.2	3.2cm
輸入電壓：AC110/220V							



LSP-A105

產品規格 Product Specification:

產品型號	電池規格	光源規格	LED顆數	充電時間	照明時間	規格尺寸(CM)	壁掛孔距
Part no.	Battery spec.	LED spec.	LEDs	Charging time	Working time	Size	Distance
LSP-A105	鎳鎘3.6V700mAh	2.24W	32顆	48小時	90分鐘以上	L7xW2.6xH16	11.4cm
輸入電壓：AC110/220V							

註：上述參數數值為典型值，實際交貨有±10%誤差！

Noted: the above parameters are standard numerical value. The actual delivery may have ±10% deviations!
Please contact our sales for other detailed specifications.