



U74LVC273

CMOS IC

OCTAL D-TYPE FLIP-FLOP WITH CLEAR ; POSITIVE-EDGE TRIGGER

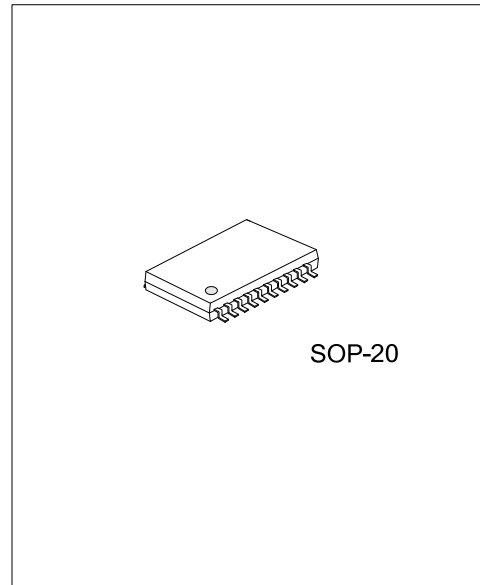
DESCRIPTION

The **U74LVC273** is a octal D-type Flip-Flop with 3-state outputs, and it has 8 channels with individual D inputs and Q outputs.

The state of each D input, one set-up time before the Low-to-High clock transition, is transferred to the corresponding output (Qn) of the flip-flop.

All outputs will be forced LOW independently of clock or data inputs by a Low voltage level on the \overline{MR} input.

The device is useful for applications where the true output only is required and the clock and master reset are common to all storage elements.



FEATURES

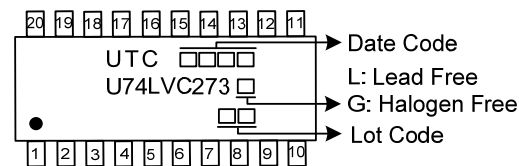
- * Operate From 1.2V to 3.6V
- * Inputs Accept Voltages to 5.5 V
- * Max tpd of 6.8 ns at 3.3 V
- * I_{off} Supports Partial-Power-Down Mode Operation

ORDERING INFORMATION

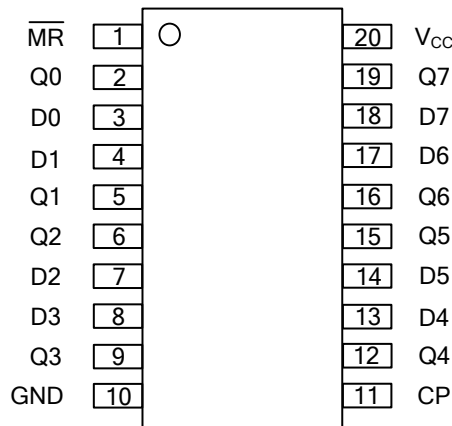
Ordering Number		Package	Packing
Lead Free	Halogen Free		
U74LVC273L-S20-R	U74LVC273G-S20-R	SOP-20	Tape Reel

<p>U74LVC273G-S20-R</p> <ul style="list-style-type: none"> (1) Packing Type (2) Package Type (3) Green Package 	<ul style="list-style-type: none"> (1) R: Tape Reel (2) S20: SOP-20 (3) G: Halogen Free and Lead Free, L: Lead Free
---	--

MARKING



■ PIN CONFIGURATION



■ FUNCTION TABLE

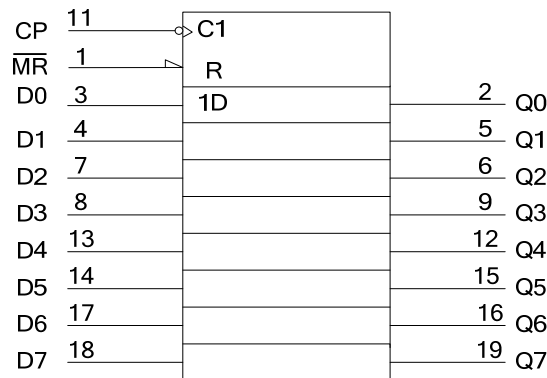
MODE	INPUTS			OUTPUT
	INPUT(\overline{MR})	CP	Dn	Qn
Reset (clear)	L	X	X	L
Load " 1 "	H	↑	h	H
Load " 0 "	H	↑	l	L

H = High voltage level ; L = Low voltage level ; X = Don't care ; ↑ = LOW-to-HIGH clock transition

h = HIGH voltage level one set-up time prior to the LOW-to-HIGH CP transition

l = LOW voltage level one set-up time prior to the LOW-to-HIGH CP transition

■ LOGIC SYMBOL



■ ABSOLUTE MAXIMUM RATING

PARAMETER	SYMBOL	CONDITIONS	RATINGS	UNIT
Supply Voltage	V_{CC}		-0.5 ~ +6.5	V
Input Voltage (Note 2)	V_{IN}		-0.5 ~ +6.5	V
Output Voltage	V_{OUT}	Output in the high or low state	-0.5 ~ $V_{CC}+0.5$	V
Continuous V_{CC} or GND Current	I_{CC}		±100	mA
Continuous Output Current	I_{OUT}	$V_{OUT}=0V \sim V_{CC}$	±50	mA
Input Clamp Current	I_{IK}	$V_{IN}<0V$	-50	mA
Output Clamp Current	I_{OK}	$V_{OUT}>V_{CC}$ or $V_{OUT}<0V$	50	mA
Storage Temperature Range	T_{STG}		-65 ~ +150	°C

Note: Absolute maximum ratings are those values beyond which the device could be permanently damaged. Absolute maximum ratings are stress ratings only and functional device operation is not implied.

■ RECOMMENDED OPERATING CONDITIONS

PARAMETER	SYMBOL	TEST CONDITIONS	MIN	TYP	MAX	UNIT
Supply Voltage	V_{CC}		1.65		3.6	V
		Functional	1.2			V
Input Voltage	V_{IN}		0		5.5	V
Output Voltage	V_{OUT}		0		V_{CC}	V
Input Transition Rise or Fall Rate	$\Delta t/\Delta v$	$V_{CC}=1.65V \sim 2.7V$	0		20	ns/V
		$V_{CC}=2.7V \sim 3.6V$	0		10	ns/V
Operating Temperature	T_A		-40		+85	°C

■ ELECTRICAL CHARACTERISTICS ($T_A=25^\circ C$, unless otherwise specified)

PARAMETER	SYMBOL	TEST CONDITIONS	MIN	TYP	MAX	UNIT
High-level Input Voltage	V_{IH}	$V_{CC}=1.2V$	1.08			V
		$V_{CC}=1.8V \pm 0.15V$	$0.65 \times V_{CC}$			V
		$V_{CC}=2.5V \pm 0.2V$	1.7			V
		$V_{CC}=3.3V \pm 0.3V$	2.0			V
Low-level Input Voltage	V_{IL}	$V_{CC}=1.2V$			0.12	V
		$V_{CC}=1.8V \pm 0.15V$			$0.35 \times V_{CC}$	V
		$V_{CC}=2.5V \pm 0.2V$			0.7	V
		$V_{CC}=3.3V \pm 0.3V$			0.8	V
High-Level Output Voltage	V_{OH}	$V_{CC}=1.65V \sim 3.6V, I_{OH}=-100\mu A$	$V_{CC}-0.2$			V
		$V_{CC}=1.65V, I_{OH}=-4mA$	1.2			V
		$V_{CC}=2.3V, I_{OH}=-8mA$	1.8			V
		$V_{CC}=2.7V, I_{OH}=-12mA$	2.2			V
		$V_{CC}=3.0V$				
		$I_{OH}=-18mA$	2.4			V
		$I_{OH}=-24mA$	2.2			V
Low-Level Output Voltage	V_{OL}	$V_{CC}=1.65V \sim 3.6V, I_{OL}=100\mu A$			0.2	V
		$V_{CC}=1.65V, I_{OL}=4mA$			0.45	V
		$V_{CC}=2.3V, I_{OL}=8mA$			0.6	V
		$V_{CC}=2.7V, I_{OL}=12mA$			0.4	V
		$V_{CC}=3.0V, I_{OL}=24mA$			0.55	V
Input Leakage Current	$I_{I(LEAK)}$	$V_{CC}=3.6V, V_{IN}=5.5V$ or GND		±0.1	±5	μA
Quiescent Supply Current	I_{CC}	$V_{CC}=3.6V, V_{IN}=V_{CC}$ or GND, $I_{OUT}=0A$		0.1	10	μA
Additional Quiescent Supply Current Per Input Pin	ΔI_{CC}	$V_{CC}=2.7V \sim 3.6V, V_{CC}-0.6V, I_{OUT}=0A$		5.0	500	μA
Input Capacitance	C_I	$V_{CC}=0V \sim 3.6V, V_{IN}=V_{CC}$ or GND		5.0		pF

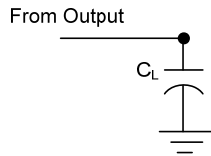
■ SWITCHING CHARACTERISTICS (T_A =25°C , unless otherwise specified)

PARAMETER	SYMBOL	TEST CONDITIONS	MIN	TYP	MAX	UNIT
Maximum Clock Pulse Frequency	f _{MAX}	V _{CC} =1.8V±0.15V	80			MHz
		V _{CC} =2.5V±0.2V	100			MHz
		V _{CC} =2.7V	150			MHz
		V _{CC} =3.3V±0.3V	150	230		MHz
Propagation delay from input (CP) to output(Qn)	t _{PD}	V _{CC} =1.2V		18		ns
		V _{CC} =1.8V±0.15V	2.5	9.7	19.2	ns
		V _{CC} =2.5V±0.2V	1.8	4.9	9.9	ns
		V _{CC} =2.7V	1.5	4.5	8.4	ns
Propagation delay from input (MR) to output(Qn)	t _{PHL}	V _{CC} =1.2V		18		ns
		V _{CC} =1.8V±0.15V	2.4	10.2	20.4	ns
		V _{CC} =2.5V±0.2V	1.7	5.2	10.5	ns
		V _{CC} =2.7V	1.5	4.7	8.9	ns
Pulse Width Clock HIGH or LOW	t _w	V _{CC} =1.8V±0.15V	6.0			ns
		V _{CC} =2.5V±0.2V	5.0			ns
		V _{CC} =2.7V	5.0	1.8		ns
		V _{CC} =3.3V±0.3V	4.0	1.2		ns
Pulse Width Master Reset LOW	t _w	V _{CC} =1.8V±0.15V	6.0			ns
		V _{CC} =2.5V±0.2V	5.0			ns
		V _{CC} =2.7V	5.0	1.7		ns
		V _{CC} =3.3V±0.3V	4.0	1.2		ns
Recovery Time MR to CP	t _{REC}	V _{CC} =1.8V±0.15V	2.0			ns
		V _{CC} =2.5V±0.2V	2.0			ns
		V _{CC} =2.7V	2.0	-1.0		ns
		V _{CC} =3.3V±0.3V	2.0	-1.0		ns
Setup Time Dn to CP	t _{SU}	V _{CC} =1.8V±0.15V	5.0			ns
		V _{CC} =2.5V±0.2V	3.5			ns
		V _{CC} =2.7V	3.0	1.0		ns
		V _{CC} =3.3V±0.3V	1.0	0.0		ns
Hold Time Dn to CP	t _H	V _{CC} =1.8V±0.15V	3.0			ns
		V _{CC} =2.5V±0.2V	2.5			ns
		V _{CC} =2.7V	2.0	-2.0		ns
		V _{CC} =3.3V±0.3V	1.0	0.0		ns
Propagation delay	t _{SK(O)}	V _{CC} =3.3V±0.3V			1.0	ns

■ OPERATING CHARACTERISTICS (f=10MHz, T_A =25°C , unless otherwise specified)

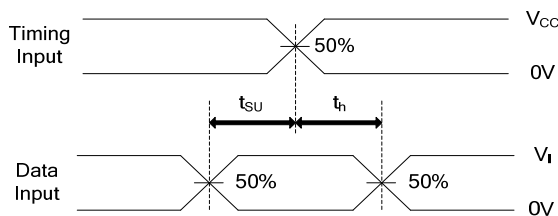
PARAMETER	SYMBOL	TEST CONDITIONS	MIN	TYP	MAX	UNIT
Power Dissipation Capacitance	C _{PD}	V _{CC} =1.8V±0.15V		14		pF
		V _{CC} =2.5V±0.2V		17.7		pF
		V _{CC} =3.3V±0.3V		21		pF

■ TEST CIRCUIT AND WAVEFORMS

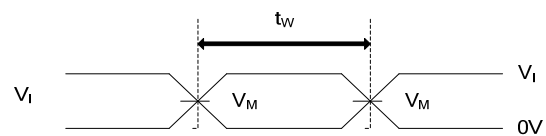


TEST CIRCUIT

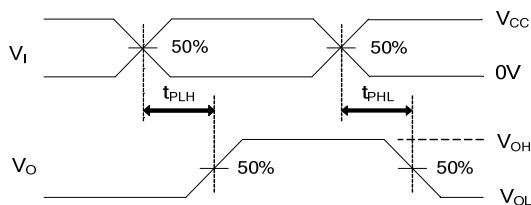
V_{CC}	INPUTS		L_{LOAD}		V_{EXT}		
	V_{IN}	t_R/t_F	C_L	R_L	t_{PLH}/t_{PHL}	t_{PLZ}/t_{PZL}	t_{PHZ}/t_{PZH}
1.2V	V_{CC}	$\leq 2ns$	30pF	1K Ω	OPEN	$2 \times V_{CC}$	GND
1.8V \pm 0.15V	V_{CC}	$\leq 2ns$	30pF	1K Ω	OPEN	$2 \times V_{CC}$	GND
2.5V \pm 0.2V	V_{CC}	$\leq 2ns$	30pF	500 Ω	OPEN	$2 \times V_{CC}$	GND
2.7V	2.7V	$\leq 2.5ns$	50pF	500 Ω	OPEN	$2 \times V_{CC}$	GND
3.3V \pm 0.3V	2.7V	$\leq 2.5ns$	50pF	500 Ω	OPEN	$2 \times V_{CC}$	GND



VOLTAGE WAVEFORMS SETUP AND HOLD TIMES



VOLTAGE WAVEFORMS PULSE DURATION



PROPAGATION DELAY TIMES

Notes: 1. C_L includes probe and jig capacitance.

2. All input pulses are supplied by generators having the following characteristics: PRR \leq 10MHz, $Z_O = 50\Omega$.

UTC assumes no responsibility for equipment failures that result from using products at values that exceed, even momentarily, rated values (such as maximum ratings, operating condition ranges, or other parameters) listed in products specifications of any and all UTC products described or contained herein. UTC products are not designed for use in life support appliances, devices or systems where malfunction of these products can be reasonably expected to result in personal injury. Reproduction in whole or in part is prohibited without the prior written consent of the copyright owner. UTC reserves the right to make changes to information published in this document, including without limitation specifications and product descriptions, at any time and without notice. This document supersedes and replaces all information supplied prior to the publication hereof.