



UD05202

Advance

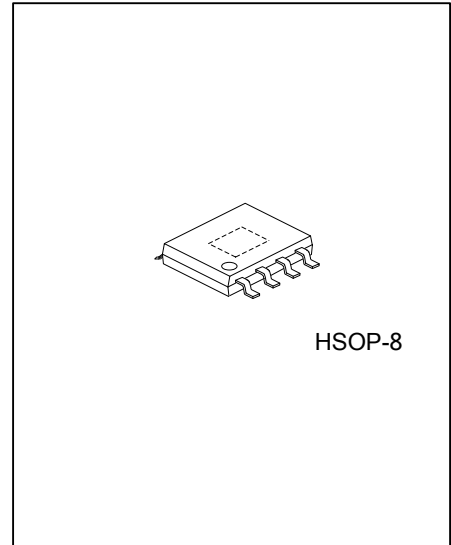
LINEAR INTEGRATED CIRCUIT

HIGH EFFICIENCY 1MHZ, DUAL 2A SYNCHRONOUS STEP DOWN REGULATOR

DESCRIPTION

The UTC **UD05202** is a high-efficiency 1MHz synchronous step-down DC-DC regulator IC capable of delivering up to 2A output current. The UTC **UD05202** operates over a wide input voltage ranging from 3V to 5.5V and integrate main switch and synchronous switch with very low $R_{DS(ON)}$ to minimize the conduction loss.

Low output voltage ripple and small external inductor and capacitor sizes are achieved with 1MHz switching frequency.



HSOP-8

FEATURES

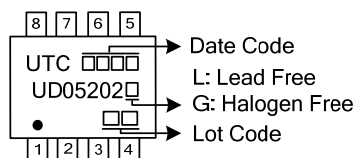
- * Low $R_{DS(ON)}$ for internal switches (top/bottom) 180m Ω /120m Ω
- * 3~5.5V input voltage range
- * 1MHz switching frequency minimizes the external components
- * Internal soft-start limits the inrush current
- * 100% dropout operation

ORDERING INFORMATION

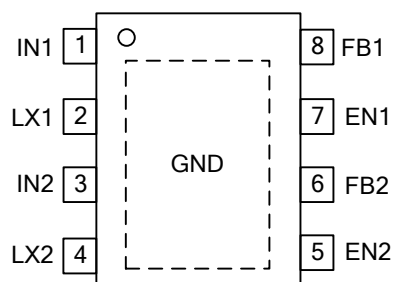
Ordering Number		Package	Packing
Lead Free	Halogen Free		
UD05202L-SH2-R	UD05202G-SH2-R	HSOP-8	Tape Reel

<p>UD05202G-SH2-R</p> <p>(1)Packing Type</p> <p>(2)Package Type</p> <p>(3)Green Package</p>	<p>(1) R: Tape Reel</p> <p>(2) SH2: HSOP-8</p> <p>(3) G: Halogen Free and Lead Free, L: Lead Free</p>
---	---

MARKING



■ PIN CONFIGURATION



■ PIN DESCRIPTION

PIN NO.	PIN NAME	DESCRIPTION
1, 3	IN1,2	Input pin. Decouple this pin to GND paddle with at least 10uF ceramic cap
2, 4	LX1,2	Inductor pin. Connect this pin to the switching node of inductor
7, 5	EN1,2	Enable control. Pull high to turn on. Do not float.
8, 6	FB1,2	Output Feedback Pin. Connect this pin to the center point of the output resistor divider (as shown in Figure 1) to program the output voltage: $V_{OUT}=0.6*(1+R1/R2)$

■ ABSOLUTE MAXIMUM RATING

PARAMETER		SYMBOL	RATINGS	UNIT
Supply Input Voltage			6	V
Enable, FB Voltage			$V_{IN}+0.6$	V
Power Dissipation	$T_A=25^{\circ}\text{C}$	P_D	1	W
Junction Temperature Range		T_J	150	$^{\circ}\text{C}$
Storage Temperature Range		T_{STG}	-65~150	$^{\circ}\text{C}$
ESD Susceptibility (Note 1)	HBM (Human Body Mode)		2	kV
	MM (Machine Mode)		200	V

Note: Absolute maximum ratings are those values beyond which the device could be permanently damaged.
Absolute maximum ratings are stress ratings only and functional device operation is not implied.

■ RECOMMENDED OPERATING CONDITIONS (Note 2)

PARAMETER		SYMBOL	RATINGS	UNIT
Supply Input Voltage			3~5.5	V
Junction Temperature Range		T_J	-40~125	$^{\circ}\text{C}$
Ambient Temperature Range		T_A	-40~85	$^{\circ}\text{C}$

Note: θ_{JA} is measured in the natural convection at $T_A=25^{\circ}\text{C}$ on a low effective single layer thermal conductivity test board of JEDEC 51-3 thermal measurement standard.

■ THERMAL DATA

PARAMETER		SYMBOL	RATINGS	UNIT
Junction to Ambient		θ_{JA}	50	$^{\circ}\text{C/W}$
Junction to Case		θ_{JC}	10	$^{\circ}\text{C/W}$

■ ELECTRICAL CHARACTERISTICS

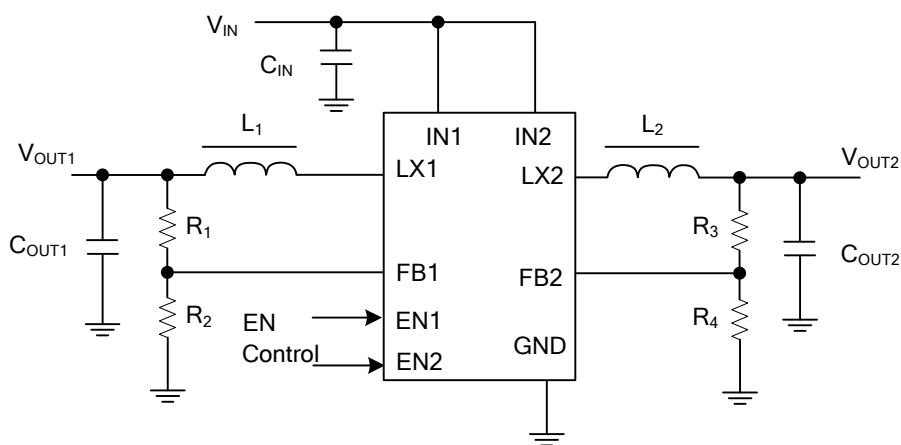
($V_{IN}=5\text{V}$, $V_{OUT}=2.5\text{V}$, $L=2.2\mu\text{H}$, $C_{OUT}=10\mu\text{F}$, $T_A=25^{\circ}\text{C}$, unless otherwise specified)

PARAMETER	SYMBOL	TEST CONDITIONS	MIN	TYP	MAX	UNIT
Input Voltage Range	V_{IN}		3		5.5	V
Quiescent Current	I_Q	$I_{OUT}=0$, $V_{FB}=V_{REF}\times 105\%$		80		μA
Shutdown Current	I_{SHDN}	EN=0			10	μA
Feedback Reference Voltage	V_{REF}		0.588	0.6	0.612	V
FB Input Current	I_{FB}	$V_{FB}=V_{IN}$	-50		50	nA
PFET RON	$R_{DS(ON)_P}$			0.18		Ω
NFET RON	$R_{DS(ON)_N}$			0.15		Ω
PFET Current Limit	I_{LIM}		3.5			A
EN Rising Threshold	V_{ENH}		1.5			V
EN Falling Threshold	V_{ENL}				0.4	V
Input UVLO Threshold	V_{UVLO}				2.9	V
UVLO Hysteresis	V_{HYS}			0.15		V
Oscillator Frequency	F_{OSC}	$I_{OUT}=100\text{mA}$		1		MHz
Min ON Time				50		ns
Max Duty Cycle			100			%
Thermal Shutdown Temperature	T_{SD}			150		$^{\circ}\text{C}$

Notes: 1. θ_{JA} is measured in the natural convection at $T_A=25^{\circ}\text{C}$ on a low effective single layer thermal conductivity test board of JEDEC 51-3 thermal measurement standard.

2. The device is not guaranteed to function outside its operating conditions.

■ TYPICAL APPLICATION CIRCUIT



UTC assumes no responsibility for equipment failures that result from using products at values that exceed, even momentarily, rated values (such as maximum ratings, operating condition ranges, or other parameters) listed in products specifications of any and all UTC products described or contained herein. UTC products are not designed for use in life support appliances, devices or systems where malfunction of these products can be reasonably expected to result in personal injury. Reproduction in whole or in part is prohibited without the prior written consent of the copyright owner. The information presented in this document does not form part of any quotation or contract, is believed to be accurate and reliable and may be changed without notice.