



## UD18203

Preliminary

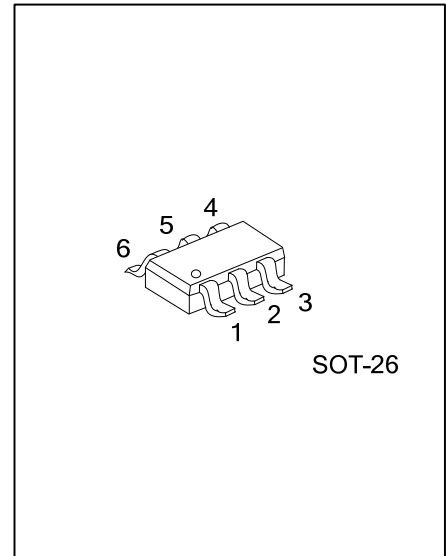
LINEAR INTEGRATED CIRCUIT

### 2A, 18V SYNCHRONOUS FAST RESPONSE BUCK CONVERTER

#### ■ DESCRIPTION

The UTC **UD18203** is a monolithic synchronous buck regulator with built-in main switch and synchronous switch power MOSFETs. It operates over a wide input voltage range from 4.5V to 18V and achieves 2A continuous output current.

It adopts PWM architecture to achieve fast transient response and high efficiency at light loads. It operates at pseudo-constant frequency of 500kHz under heavy load conditions. Internal soft-start minimizes the inrush supply current at initial startup.



#### ■ FEATURES

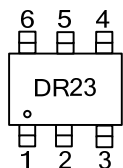
- \* 4.5V~18V Input Voltage Range
- \* Up to 2A Output Current
- \* 140/130mΩ Internal Power MOSFET Switch
- \* PWM Architecture to Achieve Fast Transient Response
- \* Build-in soft start function
- \* 500kHz Switching Frequency
- \* Thermal Shutdown Protection

#### ■ ORDERING INFORMATION

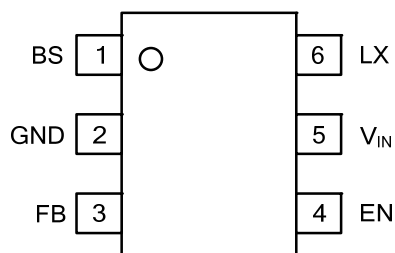
Ordering Number		Package	Packing
Lead Free	Halogen Free		
UD18203L-AG6-R	UD18203G-AG6-R	SOT-26	Tape Reel

UD18203G-AG6-R	(1) Packing Type (2) Package Type (3) Green Package	(1) R: Tape Reel (2) AG6: SOT-26 (3) G: Halogen Free and Lead Free, L: Lead Free
----------------	---	--

## MARKING



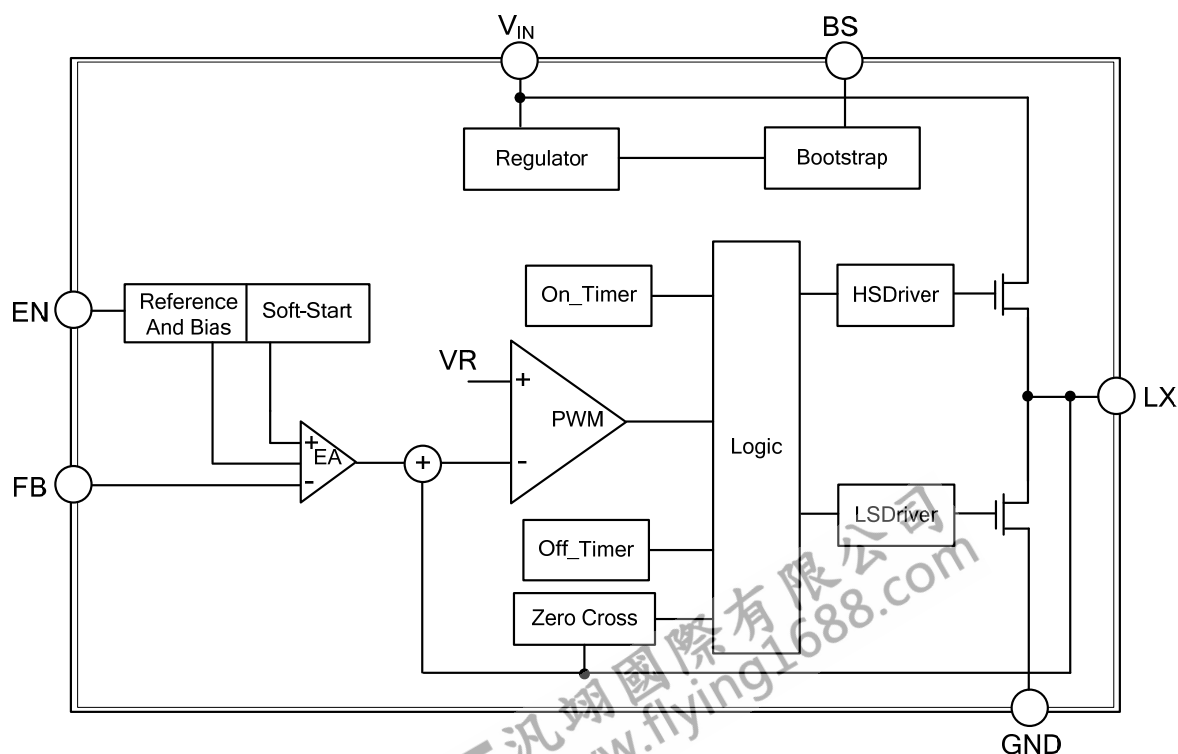
## PIN CONFIGURATION



## PIN DESCRIPTION

PIN NO.	PIN NAME	DESCRIPTION
1	BS	Bootstrap Pin. Decouple this pin to LX with 0.1 $\mu$ F ceramic cap.
2	GND	Ground Pin.
3	FB	Feedback Pin. Connect this pin to the center of output resistor divider to program the output voltage.
4	EN	Enable Pin. Pull high to turn on, do not floating.
5	V <sub>IN</sub>	Input Pin. Decouple this pin to GND with at least 1 $\mu$ F ceramic cap.
6	LX	Switch Pin. Connect this pin to the inductor.

## BLOCK DIAGRAM



# ■ ABSOLUTE MAXIMUM RATING (Note 2)

PARAMETER	SYMBOL	RATINGS	UNIT
IN Pin Voltage	$V_{IN}$	19	V
LX, EN Pins Voltage		$V_{IN}+0.3$	V
FB, BS-LX Voltage		6	V
Junction Temperature	$T_J$	+125	°C
Operating Temperature	$T_{OPR}$	-20 ~ +85	°C
Storage Temperature	$T_{STG}$	-55 ~ +150	°C

Notes: 1. Absolute maximum ratings are those values beyond which the device could be permanently damaged.

Absolute maximum ratings are stress ratings only and functional device operation is not implied.

2. Exceeding these ratings may damage the device.

# ■ THERMAL DATA

PARAMETER	SYMBOL	RATINGS	UNIT
Junction to Ambient	$\theta_{JA}$	270	°C/W
Junction to Case	$\theta_{JC}$	90	°C/W

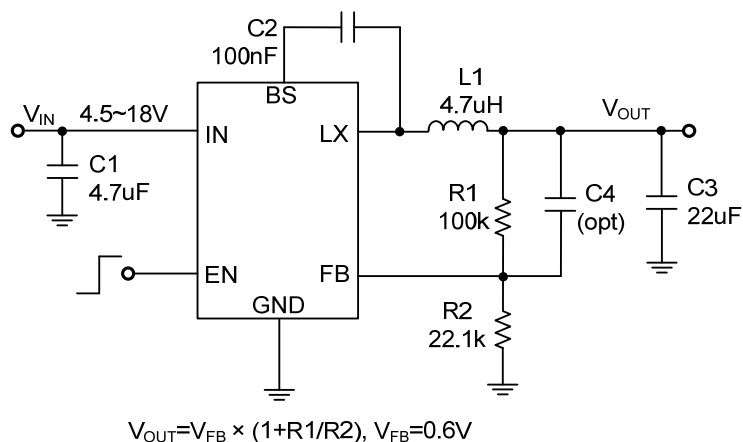
# ■ ELECTRICAL CHARACTERISTICS

( $V_{IN}=12V$ ,  $V_{OUT}=1.2V$ ,  $T_A=25^{\circ}C$ , unless otherwise specified)

PARAMETER	SYMBOL	TEST CONDITIONS	MIN	TYP	MAX	UNIT
Input Voltage Range	$V_{IN}$		4.5		18	V
Input UVLO	UVLO				4.5	V
Quiescent Current	$I_Q$	Non Switching		650		μA
Shutdown Current	$I_{SD}$	$V_{EN}=0V$		5	10	μA
FB Pin Voltage	$V_{FB}$		0.588	0.6	0.612	V
EN Pin Voltage High	$V_{ENH}$		1.5			V
EN Pin Voltage Low	$V_{ENL}$				0.4	V
On Time (Note)	$T_{ON}$	$V_{IN}=12V$ , $V_{OUT}=1.2V$ , $I_{OUT}=1A$		200		ns
Valley Current Limit	$I_L$			2.5		A
Top-Switch $R_{DS(ON)}$	$R_{DS(ON) T}$			140		mΩ
Bottom-Switch $R_{DS(ON)}$	$R_{DS(ON) B}$			130		mΩ
Thermal Shutdown	$T_{SD}$			150		°C
Thermal Shutdown Protection hysteresis	$T_{SH}$			15		°C

Note: Guaranteed by design.

■ TYPICAL APPLICATION CIRCUIT



UTC assumes no responsibility for equipment failures that result from using products at values that exceed, even momentarily, rated values (such as maximum ratings, operating condition ranges, or other parameters) listed in products specifications of any and all UTC products described or contained herein. UTC products are not designed for use in life support appliances, devices or systems where malfunction of these products can be reasonably expected to result in personal injury. Reproduction in whole or in part is prohibited without the prior written consent of the copyright owner. UTC reserves the right to make changes to information published in this document, including without limitation specifications and product descriptions, at any time and without notice. This document supersedes and replaces all information supplied prior to the publication hereof.