



UFZ24N-F

Power MOSFET

17A, 55V N-CHANNEL POWER MOSFET

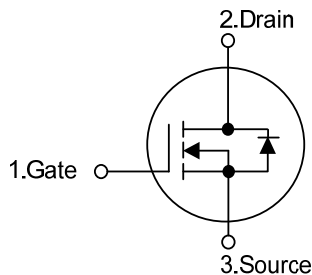
DESCRIPTION

The UTC **UFZ24N-F** is a N-channel enhancement mode power MOSFET using UTC's advanced technology to provide customers with a minimum on-state resistance and superior switching performance. The UTC **UFZ24N-F** is suitable for high efficiency synchronous rectification in SMPS, primary side switch and telecom bricks.

FEATURES

- * $R_{DS(ON)} \leq 43 \text{ m}\Omega @ V_{GS}=10V, I_D=10A$
- * High switching speed
- * Low gate charge

SYMBOL



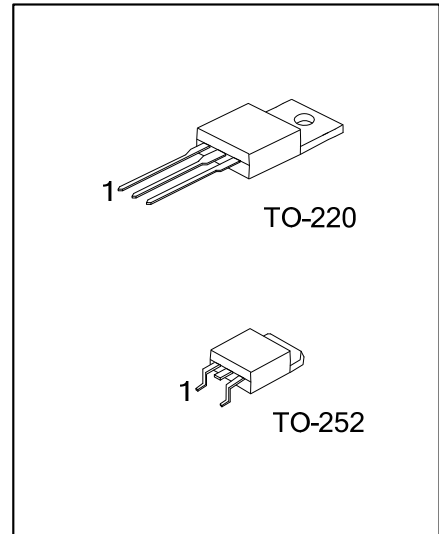
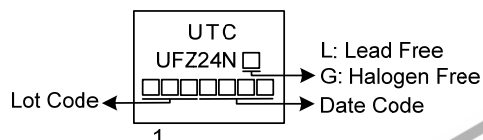
ORDERING INFORMATION

Ordering Number		Package	Pin Assignment			Packing
Lead Free	Halogen Free		1	2	3	
UFZ24NL-TA3-T	UFZ24NG-TA3-T	TO-220	G	D	S	Tube
UFZ24NL-TN3-R	UFZ24NG-TN3-R	TO-252	G	D	S	Tape Reel

Note: Pin Assignment: G: Gate D: Drain S: Source

<p>UFZ24NG-TA3-T</p> <p>(1)Packing Type</p> <p>(2)Package Type</p> <p>(3)Green Package</p>	<p>(1) T: Tube, R: Tape Reel</p> <p>(2) TA3: TO-220, TN3: TO-252</p> <p>(3) G: Halogen Free and Lead Free, L: Lead Free</p>
--	---

MARKING



■ ABSOLUTE MAXIMUM RATINGS ($T_C=25^{\circ}\text{C}$, unless otherwise specified)

PARAMETER		SYMBOL	RATINGS	UNIT
Drain-Source Voltage		V_{DSS}	55	V
Gate-Source Voltage		V_{GSS}	± 20	V
Drain Current	Continuous	I_D	17	A
	Pulsed	I_{DM}	68	A
Avalanche Energy	Single Pulsed (Note 3)	E_{AS}	172	mJ
Peak Diode Recovery dv/dt (Note 4)		dv/dt	5.2	V/ns
Power Dissipation	TO-220	P_D	45	W
	TO-252		30	W
Junction Temperature		T_J	+150	$^{\circ}\text{C}$
Storage Temperature Range		T_{STG}	-55 ~ +150	$^{\circ}\text{C}$

- Notes: 1. Absolute maximum ratings are those values beyond which the device could be permanently damaged. Absolute maximum ratings are stress ratings only and functional device operation is not implied.
 2. Repetitive Rating : Pulse width limited by maximum junction temperature.
 3. $L=1.4\text{mH}$, $I_{AS}=15.7\text{A}$, $V_{DD}=25\text{V}$, $R_G=25\ \Omega$, Starting $T_J = 25^{\circ}\text{C}$
 4. $I_{SD}\leq 17\text{A}$, $di/dt\leq 200\text{A}/\mu\text{s}$, $V_{DD}\leq BV_{DSS}$, Starting $T_J = 25^{\circ}\text{C}$

■ THERMAL DATA

PARAMETER		SYMBOL	RATINGS	UNIT
Junction to Ambient	TO-220	θ_{JA}	62.5	$^{\circ}\text{C}/\text{W}$
	TO-252		100	$^{\circ}\text{C}/\text{W}$
Junction to Case	TO-220	θ_{JC}	2.7	$^{\circ}\text{C}/\text{W}$
	TO-252		4.16 (Note)	$^{\circ}\text{C}/\text{W}$

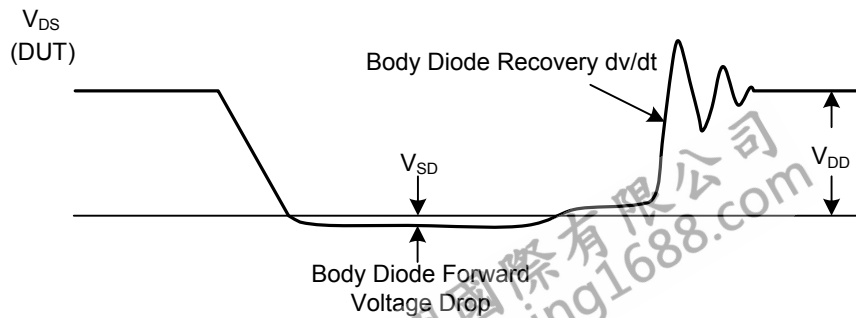
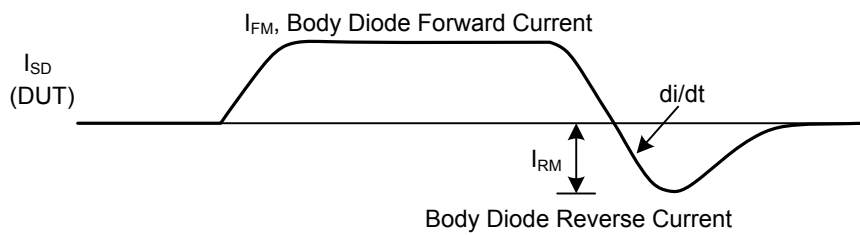
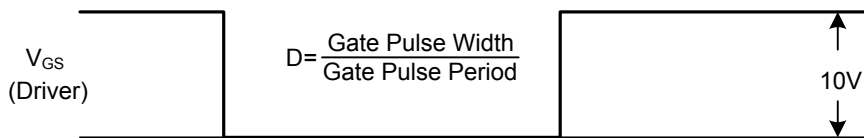
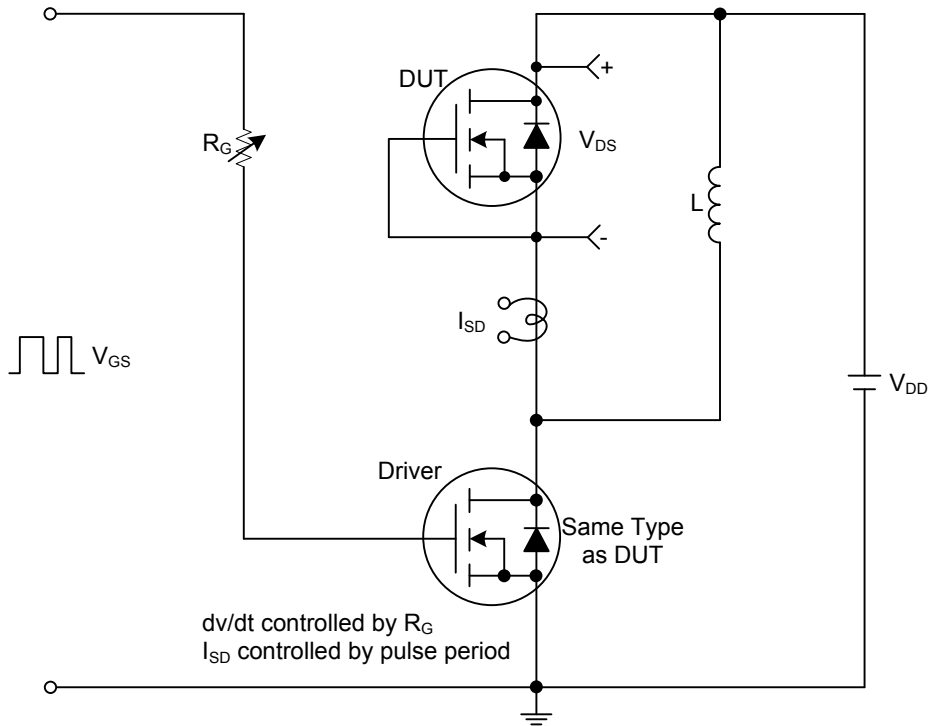
Note: Device mounted on FR-4 substrate PC board, 2oz copper, with 1inch square copper plate.

■ ELECTRICAL CHARACTERISTICS (T_J=25°C, unless otherwise specified)

PARAMETER	SYMBOL	TEST CONDITIONS	MIN	TYP	MAX	UNIT
OFF CHARACTERISTICS						
Drain-Source Breakdown Voltage	BV _{DSS}	I _D =250μA, V _{GS} =0V	55			V
Drain-Source Leakage Current	I _{DSS}	V _{DS} =55V, V _{GS} =0V			1	μA
Gate-Source Leakage Current	Forward	V _{GS} =+20V, V _{DS} =0V V _{GS} =-20V, V _{DS} =0V			+100	nA
	Reverse				-100	nA
ON CHARACTERISTICS						
Gate Threshold Voltage	V _{GS(TH)}	V _{DS} =V _{GS} , I _D =250μA	1.5		3.5	V
Static Drain-Source On-State Resistance	R _{DS(ON)}	V _{GS} =10V, I _D =10A			43	mΩ
DYNAMIC PARAMETERS						
Input Capacitance	C _{ISS}	V _{DS} =25V, V _{GS} =0V, f=1.0MHz		710		pF
Output Capacitance	C _{OSS}			210		pF
Reverse Transfer Capacitance	C _{RSS}			40		pF
SWITCHING PARAMETERS						
Total Gate Charge (Note 1)	Q _G	V _{DS} =30V, V _{GS} =10V, I _D =17A, I _G =1mA(Note 1, 2)		26.5		nC
Gate to Source Charge	Q _{GS}			6.3		nC
Gate to Drain Charge	Q _{GD}			6.8		nC
Turn-ON Delay Time (Note 1)	t _{D(ON)}	V _{DD} =30V, V _{GS} =10V, I _D =17A, R _G =25Ω (Note 1, 2)		8.0		ns
Rise Time	t _R			19		ns
Turn-OFF Delay Time	t _{D(OFF)}			58		ns
Fall-Time	t _F			26		ns
SOURCE- DRAIN DIODE RATINGS AND CHARACTERISTICS						
Maximum Body-Diode Continuous Current	I _S				17	A
Maximum Body-Diode Pulsed Current	I _{SM}				68	A
Drain-Source Diode Forward Voltage (Note 1)	V _{SD}	I _S =10A, V _{GS} =0V			1.3	V
Reverse Recovery Time (Note 1)	t _{rr}	I _S =10A, V _{GS} =0V, dI _F /dt =100A/μs		44.6		ns
Reverse Recovery Charge	Q _{rr}				71.2	

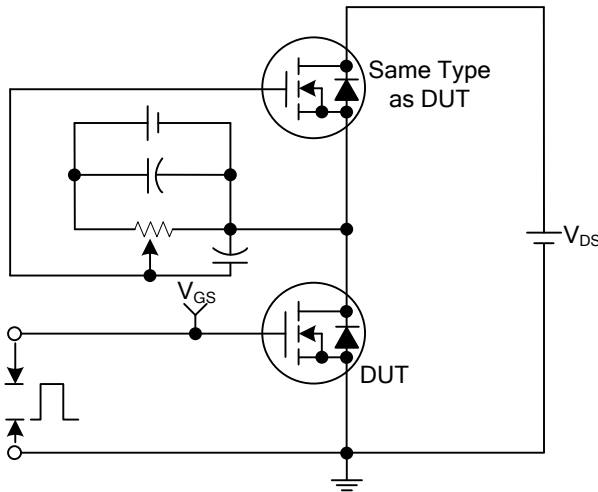
Note: 1. Pulse Test: Pulse width ≤ 300μs, Duty cycle ≤ 2%.
2. Essentially independent of operating temperature.

TEST CIRCUITS AND WAVEFORMS

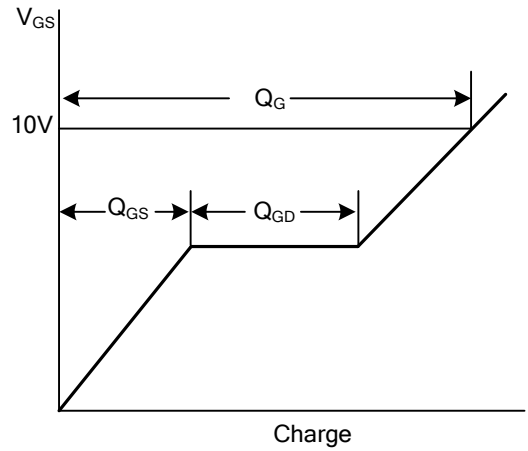


Peak Diode Recovery dv/dt Test Circuit and Waveforms

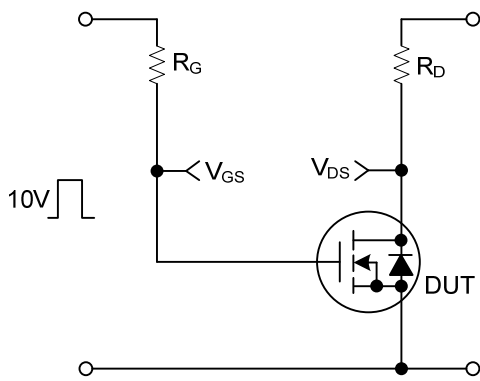
TEST CIRCUITS AND WAVEFORMS



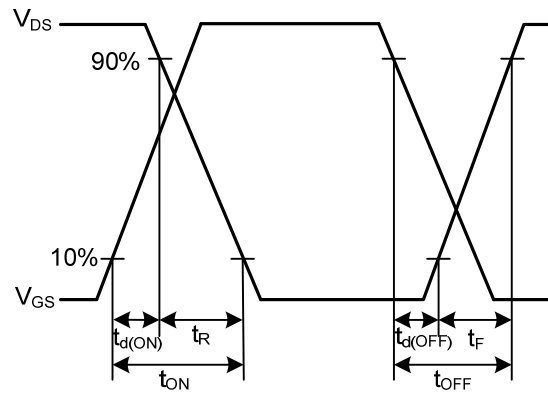
Gate Charge Test Circuit



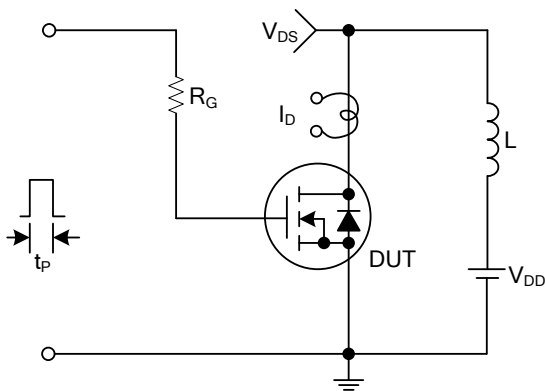
Gate Charge Waveforms



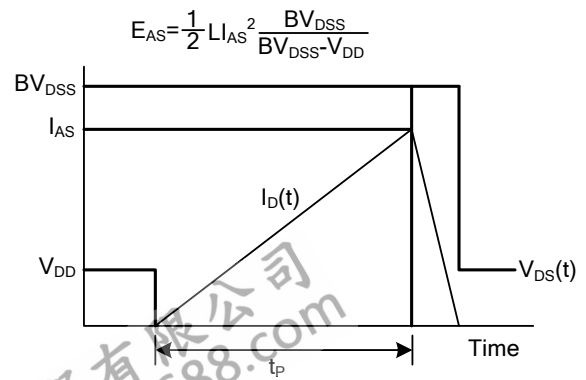
Resistive Switching Test Circuit



Resistive Switching Waveforms

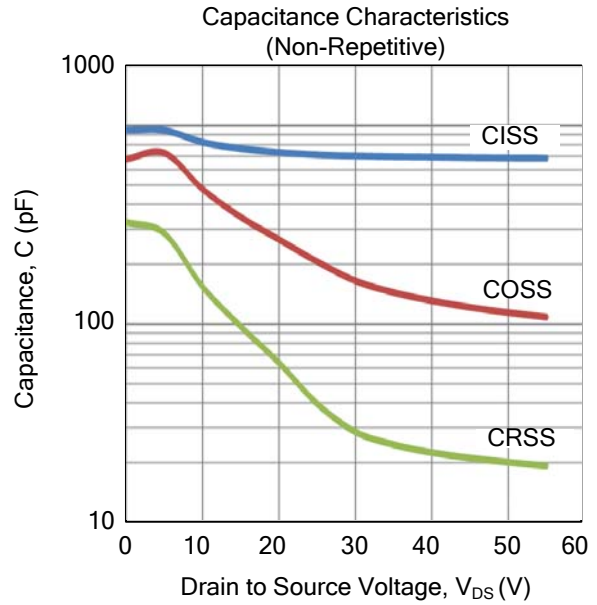
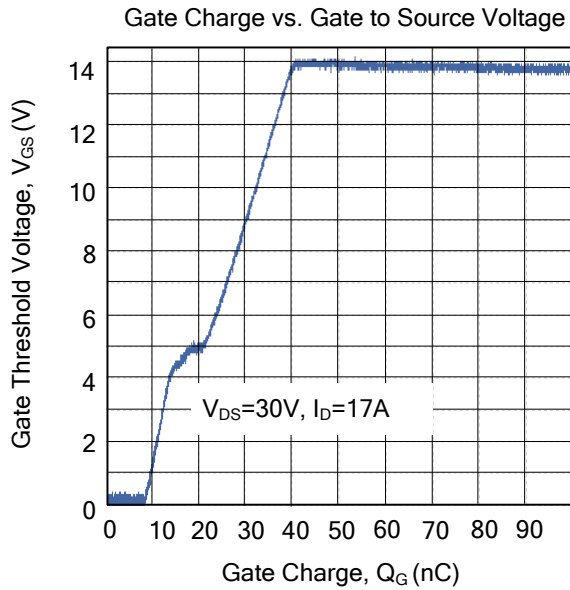


Unclamped Inductive Switching Test Circuit



Unclamped Inductive Switching Waveforms

TYPICAL CHARACTERISTICS



UTC assumes no responsibility for equipment failures that result from using products at values that exceed, even momentarily, rated values (such as maximum ratings, operating condition ranges, or other parameters) listed in products specifications of any and all UTC products described or contained herein. UTC products are not designed for use in life support appliances, devices or systems where malfunction of these products can be reasonably expected to result in personal injury. Reproduction in whole or in part is prohibited without the prior written consent of the copyright owner. UTC reserves the right to make changes to information published in this document, including without limitation specifications and product descriptions, at any time and without notice. This document supersedes and replaces all information supplied prior to the publication hereof.